

WAAS
CH **72733**
W19A

APP CRS
195°

Rwy Ldg
TDZE **880**
Apt Elev **880**

RNAV (GPS) RWY 19

A PAUL VANCE FREDERICKTOWN RGNL (H88)

▼

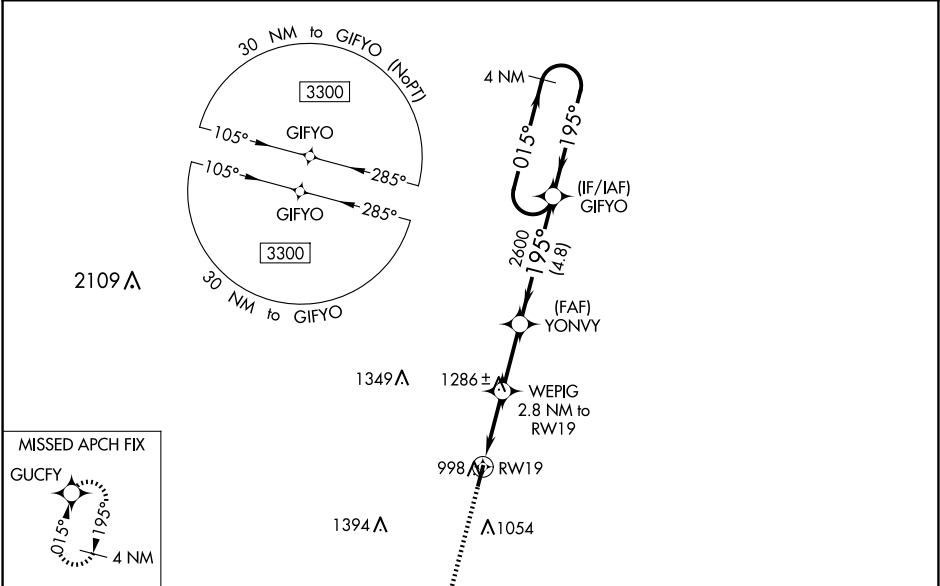
⚠ NA

Baro-VNAV NA. DME/DME RNP-0.3 NA. Rwy 19 helicopter visibility reduction below ¾ SM NA. Use Farmington altimeter setting; when not received, use Sparta altimeter setting and increase all DA 111 feet, all MDA 120 feet, LPV all Cats visibility ¾ mile, LNAV/VNAV all Cats visibility ½ mile, LNAV Cat B visibility ¼ mile and Cat C visibility ½ mile and increase Circling all Cats visibility ¼ mile.

MISSED APPROACH: Climb to 3300 direct GUCFY and hold.

KANSAS CITY CENTER
127.475 346.275

UNICOM
122.8 (CTAF) 0



ELEV 880

TDZE 880

195°

61

4000 X 75

1

3300

GUCFY

*LNAV only.

RW19

WEPIG 2.8 NM to RW19

YONVY 2600

GIFYO 4 NM Holding Pattern

015° → 3300

← 195°

195°

2600

*1800

2.8 NM

2.5 NM

4.8 NM

GP 3.00°

TCH 42

CATEGORY	A	B	C	D
LPV DA	1166-1 286 (300-1)			NA
LNAV/VNAV DA	1536-2¼ 656 (700-2¼)			NA
LNAV MDA	1580-1	700 (700-1)	1580-2 700 (700-2)	NA
CIRCLING	1580-1	700 (700-1)	1640-2¼ 760 (800-2¼)	NA

MIRL Rwy 1-19 0