

WAAS CH 49133 W36A	APP CRS 001°	Rwy Idg 5003 TDZE 164 Apt Elev 164
--	------------------------	---

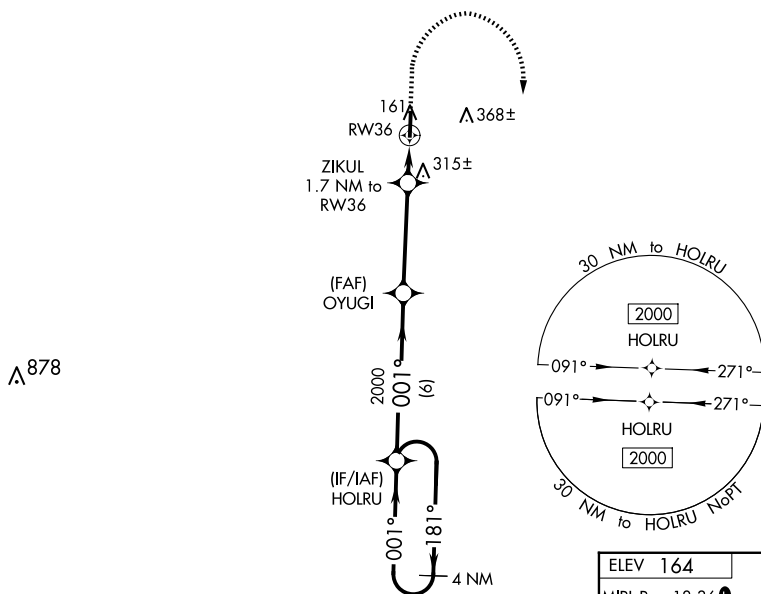
RNAV (GPS) RWY 36

BILLY FREE MUNI (ØMØ)

V Baro-VNAV NA. DME/DME RNP-0.3 NA. Use Pine Bluff altimeter setting, when not received use Greenville, M5 altimeter setting and increase all DA 22 feet and all MDA 40 feet; increase LPV all Cats visibility $\frac{1}{8}$ mile and Circling Cat C visibility $\frac{1}{4}$ mile. Helicopter visibility reduction below $\frac{3}{4}$ SM NA.

MISSED APPROACH: Climb to 1000 then climbing right turn to 2000 direct HOLRU and hold.

PBF ASOS 120.775	MEMPHIS CENTER 135.875 269.35	UNICOM 122.8 (CTAF) U
----------------------------	---	--



4 NM Holding Pattern

HOLRU

OYUGI

2000

$\leftarrow 181^\circ$

$\rightarrow 001^\circ$

GP 3,000°
TCH 40

ZIKUL
1.7 NM to RW36

*LNNAV only.

6 NM

3.9 NM

1.7 NM

CATEGORY	A	B	C	D
LPV DA	481-1	317 (400-1)		NA
LNAV/VNAV DA	492-1½	328 (400-1½)		NA
LNAV MDA	640-1	476 (500-1)	640-1⅜ 476 [500-1⅝]	NA
C CIRCLING	780-1	616 (700-1)	800-1¾ 636 [700-1¾]	NA

