


WAAS CH 78443 W06A	APP CRS 057°	Rwy Idg TDZE Apt Elev	3001 53 53
--	------------------------	-----------------------------	---------------------------------------

RNAV (GPS) RWY 6
MEKORYUK (MYU) (PAMY)

RNP APCH-GPS.		MISSED APPROACH: Climb to 700 then climbing left turn to 2800 direct NANWK and hold.	
 Circling NA southeast of Rwy 6-24.			
AWOS-3P 123.9	ANCHORAGE CENTER 124.5 372.0	KENAI RADIO 122.0	CTAF 122.9 0

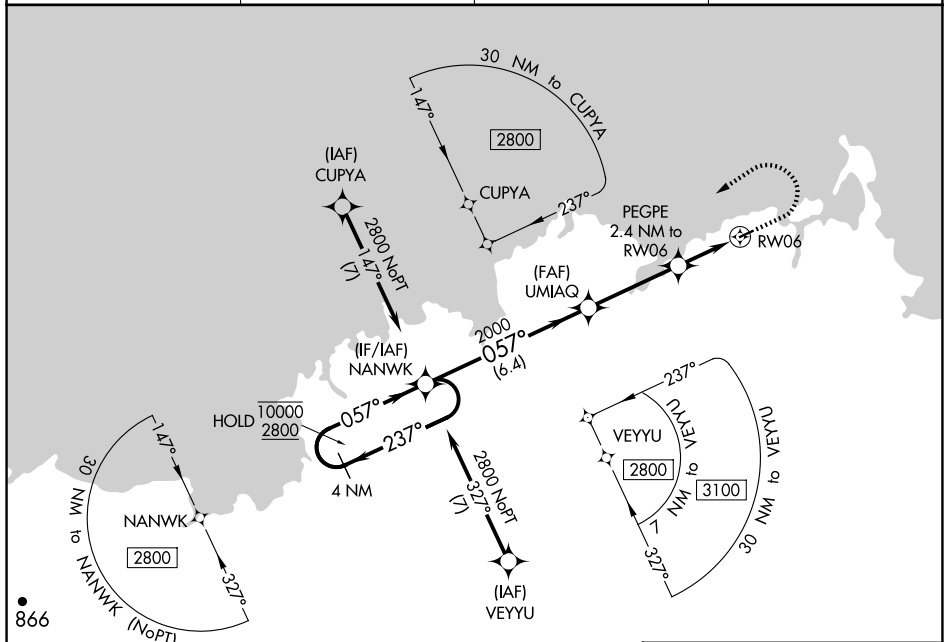


Diagram illustrating the RNAV (RNP) approach for runway 06 at Umanak (CYUM). The approach is a 4 NM Holding Pattern at 10000 and 2800 feet. The approach path starts at 2800 feet, turns 237° left, then 057° right, and finally 057° left to the runway. Key points include Umanak (UMIAQ) at 2000 feet, a 6.4 NM segment, a 3.6 NM segment, and a final 1.6 NM segment to the runway. The diagram also shows the VGSB and RNAV glidepaths not coincident (VGSB Angle 3.00/TCH 28).

