

RNAV (GPS) RWY 36
MACHIAS VALLEY(MVM)

MISSED APPROACH: Climbing left turn to 3000 direct AYUYU and hold, continue climb-in-hold to 3000.

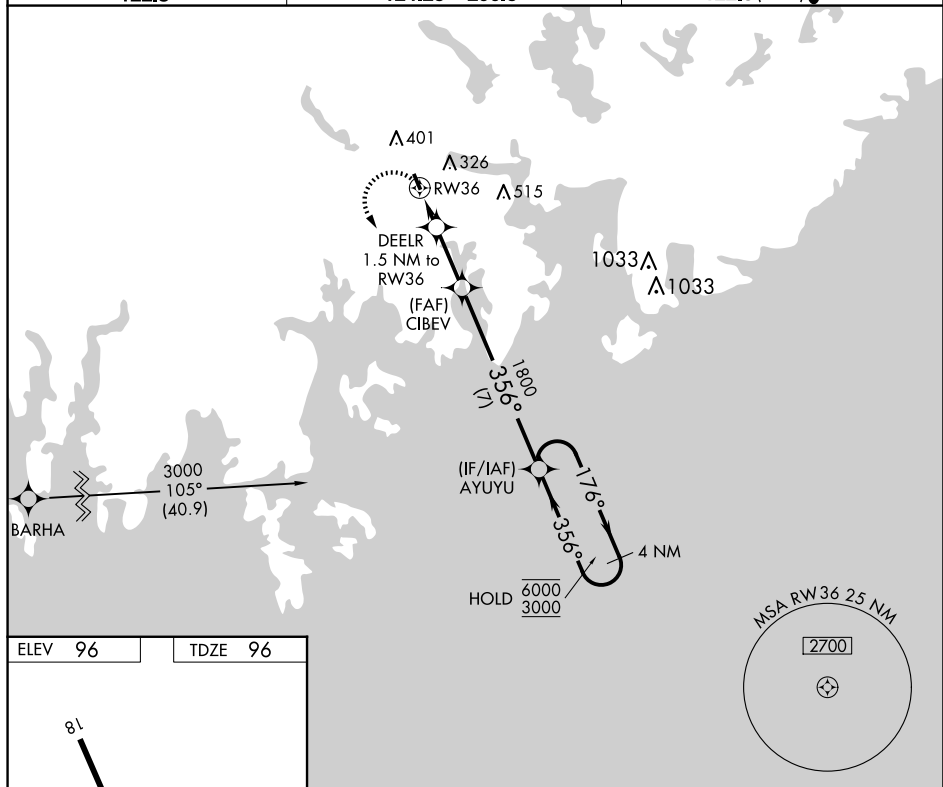
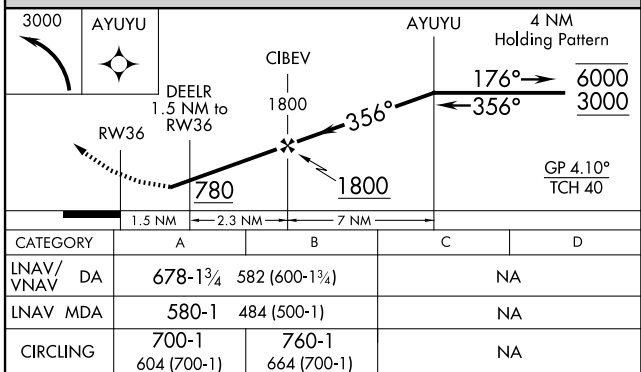
UNICOM
122.8 (CTAF) **L**

Diagram illustrating the REIL Rwy 36 and MIRL Rwy 18-36. The diagram shows a runway layout with a heading of 356° and a slope of 0.9% up. The runway is labeled 36 at one end and 18 at the other. A star symbol is present near the 36 end.



NE-1, 10 JUL 2025 to 07 AUG 2025