

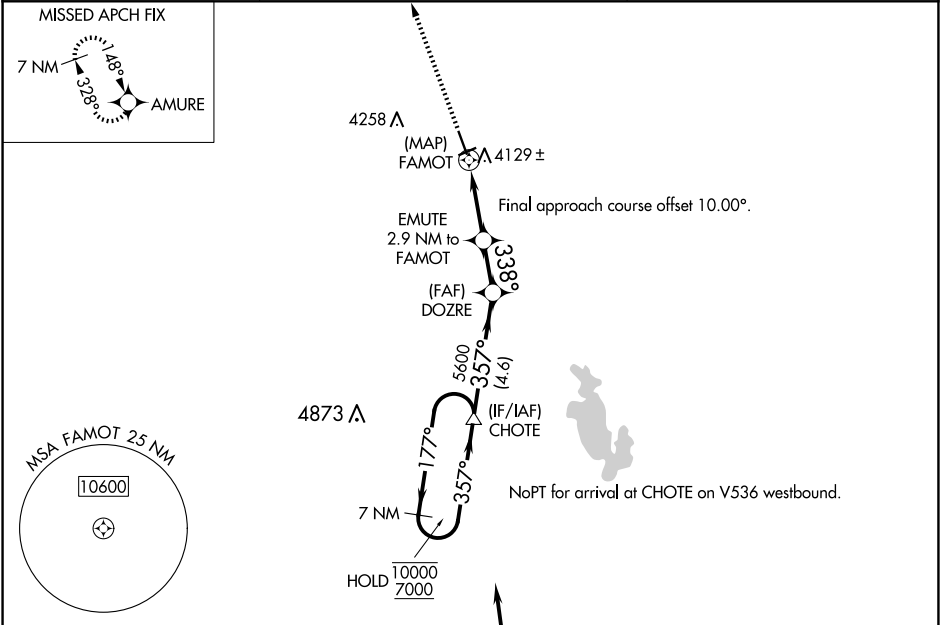
APP CRS	Rwy ldg	5000
338°	TDZE	3943
	Apt Elev	3947

RNAV (GPS) RWY 33

CHOTEAU (CII)

RNP APCH.	MISSED APPROACH: Climb to 6600 direct AMURE and hold.
NA Rwy 33 helicopter visibility reduction below ¾ SM NA.	

AWOS-2 119.275	SALT LAKE CITY CENTER 133.4 285.4	UNICOM 122.8 (CTAF)
-------------------	--------------------------------------	------------------------



ELEV 3947	TDZE 3943
-----------	-----------

