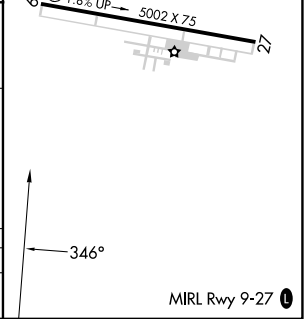
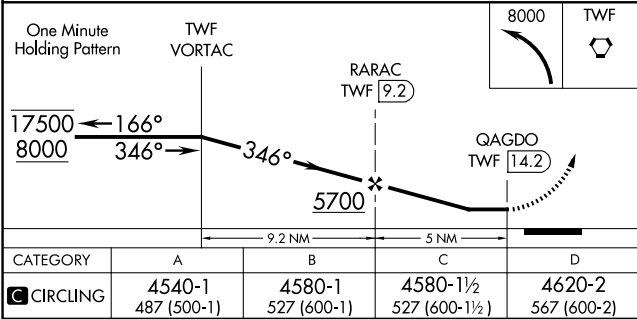
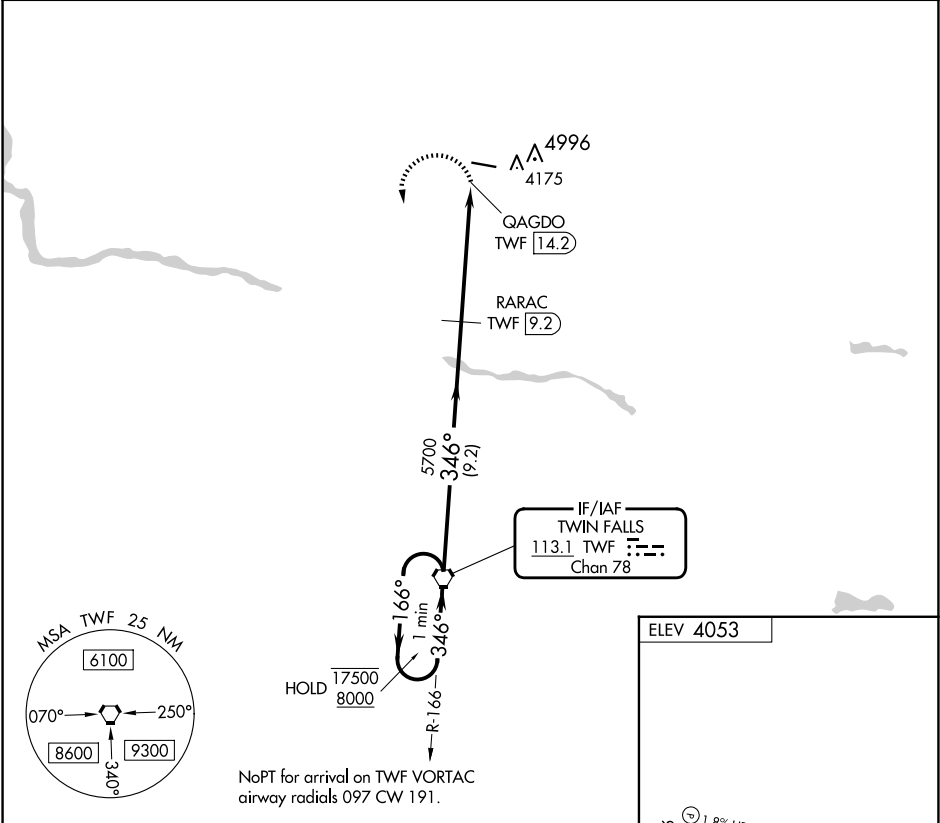


VORTAC TWF <b>113.1</b> Chan <b>78</b>	APP CRS <b>346°</b>	Rwy Idg TDZE Apt Elev <b>N/A</b> <b>N/A</b> <b>4053</b>
--	------------------------	--

**VOR-A**  
JEROME COUNTY (JER)

DME required.	MISSED APPROACH: Climbing left turn to 8000 direct TWF VORTAC and hold, continue climb-in-hold to 8000.
<div><div></div><div></div></div> Circling NA north of Rwy 9-27.	

ASOS <b>135,225</b>	TWIN FALLS APP CON★ <b>126.7 353.75</b>	UNICOM <b>122.8 (CTAF) 0</b>
------------------------	--	---------------------------------



NW-1, 10 JUL 2025 to 07 AUG 2025

NW-1, 10 JUL 2025 to 07 AUG 2025