

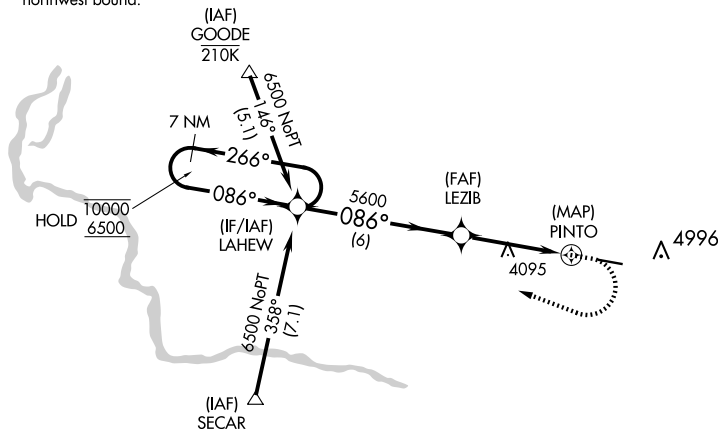


WAAS CH 90144 W09A	APP CRS 086°	Rwy Idg TDZE Apt Elev	5002 4019 4053
--	------------------------	-----------------------------	---

RNAV (GPS) RWY 9
JEROME COUNTY (JER)

<p>RNP APCH.</p> <p> </p> <p>For uncompensated Baro-VNAV systems, LNAV/VNAV NA below -16°C or above 54°C. Circling NA north of Rwy 9-27.</p>		<p>MISSED APPROACH: (Do not exceed 185K until LAHEW) Climb to 4900 then climbing right turn to 6500 direct LAHEW and hold. # Missed approach requires minimum climb of 300 feet per NM to 5200.</p>
<p>ASOS 135.225</p>	<p>TWIN FALLS APP CON★ 126.7 353.75</p>	<p>UNICOM 122.8 (CTAF) ①</p>

Procedure NA for arrivals at GOODE
on V4 northwest bound and V293
northwest bound



Procedure NA for arrivals at SECAR
on V253 southeast bound.

CATEGORY	A	B	C	D
LPV DA #	4544-1½	525 (500-1½)		
LPV DA	4624-1¾	605 (600-1¾)		
RNAV/VNAV DA	4674-1⅞	655 (700-1⅞)		
RNAV MDA	4820-1 801 (800-1)	4820-1¼ 801 (800-1¼)	4820-2½	801 (800-2½)
CIRCLING	4820-1 767 (800-1)	4820-1¼ 767 (800-1¼)	4820-2½	767 (800-2½)

NW-1, 10 JUL 2025 to 07 AUG 2025

NW-1, 10 JUL 2025 to 07 AUG 2025