

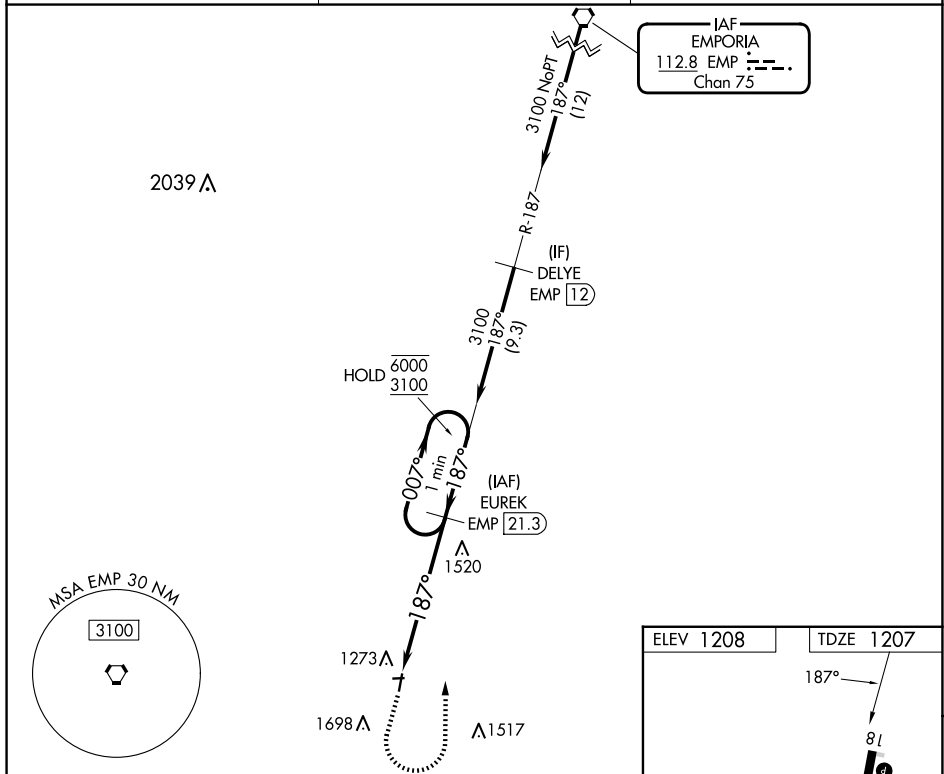
24137

VOR RWY 18
LT WILLIAM M MILLIKEN (13K)

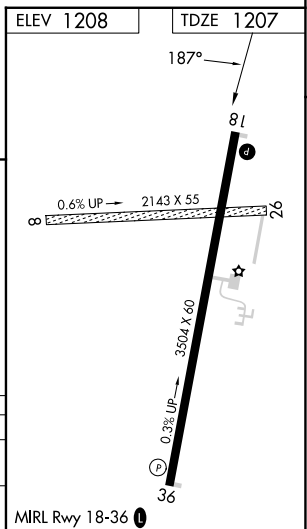
T Circling NA to Rwy 8 and 26. When local altimeter setting not received, use Emporia altimeter setting: increase all MDAs 80 feet and S-18 Cat C visibility $\frac{1}{4}$ SM, Circling Cat C visibility $\frac{1}{4}$ SM.

MISSED APPROACH: Climb to 2100 then climbing left turn to 3100 on EMP R-187 to EUREK/21.3 DME and hold.

AWOS-3PT 120.975	KANSAS CITY CENTER 120.2 323.2	UNICOM 122.8 (CTAF) 1
----------------------------	--	--



2100 ↑	3100 EMP R-187	EUREK EMP 21.3	VGS1 and descent angles not coincident (VGS1 Angle 3.00/TCH 34).	
CATEGORY	A	B	C	D
S-18	1820-1	613 (700-1)	1820-1¾ 613 (700-1¾)	NA
CIRCLING	1820-1	612 (700-1)	2060-2½ 852 (900-2½)	NA



LT WILLIAM M MILLIKEN (13K)
VOR RWY 18

NC-2, 10 JUL 2025 to 07 AUG 2025