

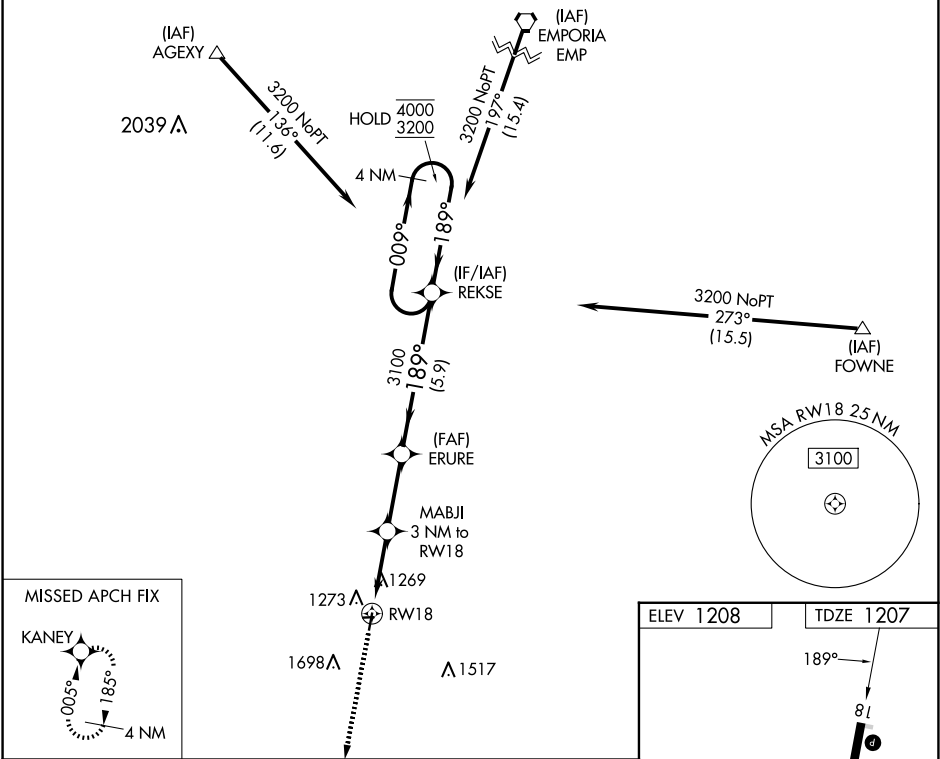
APP CRS	Rwy Idg	3504
189°	TDZE	1207
	Apt Elev	1208

RNAV (GPS) RWY 18

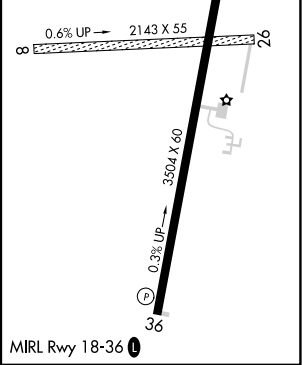
LT WILLIAM M MILLIKEN (13K)

RNP APCH - GPS.	MISSED APPROACH: Climb to 3200 direct KANEY and hold.
<div><div>▼</div><div>⚠</div></div> <div>Circling NA to Rwy 8 and 26. VDP NA when using Emporia altimeter setting. When local altimeter setting not received, use Emporia altimeter setting and increase all MDAs 80 feet and LNAV Cat C visibility ¼ SM, Circling Cat C visibility ¼ SM.</div>	

AWOS-3PT 120.975	KANSAS CITY CENTER 120.2 323.2	UNICOM 122.8 (CTAF) 0
---------------------	-----------------------------------	--------------------------



3200	KANEY	VGSI and descent angles not coincident (VGSI Angle 3.00/TCH 34).			
↑	✱	4 NM Holding Pattern			
MABJI 3 NM to RW18		ERURE	REKSE	4000	3200
1.1 NM to RW18		3100	2200	189°	009°
1.1 NM		1.9 NM	2.8 NM	5.9 NM	
CATEGORY	A	B	C	D	
LNAV MDA	1600-1	393 (400-1)	1600-1½ 393 (400-1½)	NA	
CIRCLING	1640-1 432 (500-1)	1660-1 452 (500-1)	2060-2½ 852 (900-2½)	NA	



NC-2, 10 JUL 2025 to 07 AUG 2025

NC-2, 10 JUL 2025 to 07 AUG 2025