

APP CRS
239°

Rwy Idg
2998

TDZE
5

Apt Elev
5

RNAV (GPS) RWY 24

OCRACOKE ISLAND (W95)

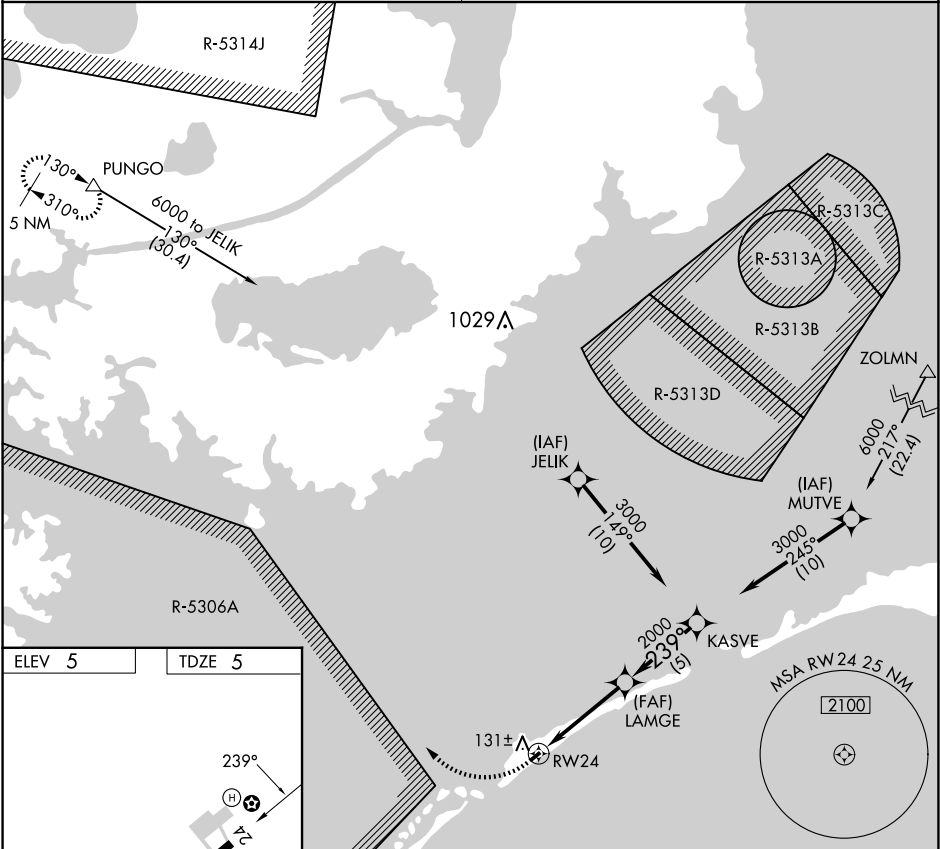
NA

Procedure NA at night. Use Hatteras altimeter setting, when not received procedure NA. DME/DME RNP-0.3 NA. Helicopter visibility reduction below 1 SM NA.

MISSED APPROACH: Climbing right turn to 6000 direct PUNGO WP and hold.

CHERRY POINT APP CON
119.75 360.775

CTAF
122.9



ELEV 5

TDZE 5

CATEGORY	A	B	C	D
LNAV MDA	500-1	495 (500-1)	NA	NA
CIRCLING	560-1	555 (600-1)	NA	NA