

WAAS CH <b>78202</b> <b>W11A</b>	APP CRS <b>110°</b>	Rwy Idg TDZE Apt Elev	<b>5000</b> <b>2537</b> <b>2537</b>
--	------------------------	-----------------------------	---

RNAV (GPS) RWY 11

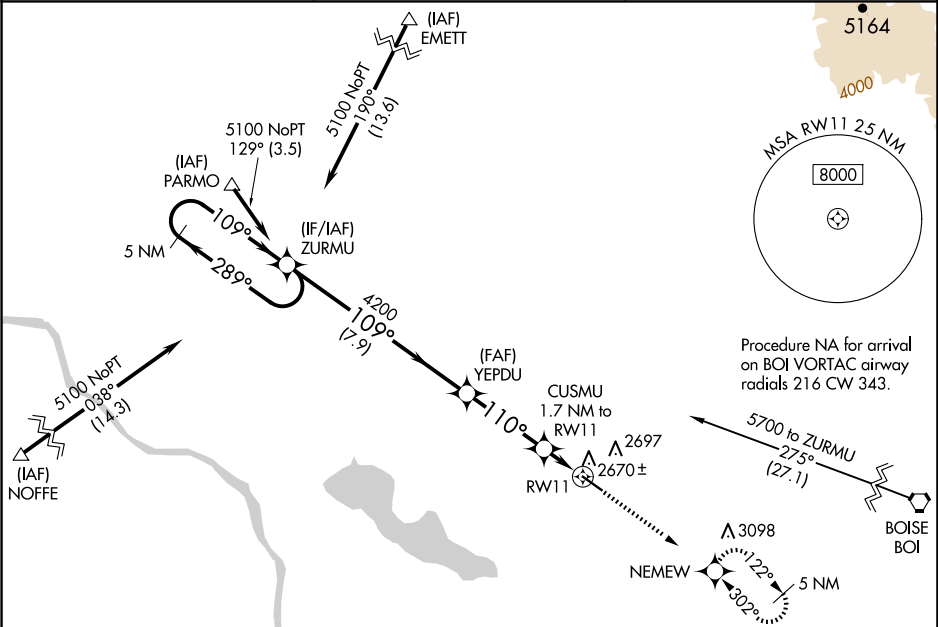
NAMPA MUNI (MAN)

⚠

For uncompensated Baro-VNAV systems, LNAV/VNAV NA below -20°C (-4°F) or above 54°C (130°F). When Circling to Rwy 29 at night, operational VGSI required, remain on or above VGSI glidepath until threshold. DME/DME RNP-0.3 NA. Rwy 11 helicopter visibility reduction below ¾ SM NA.

MISSED APPROACH: Climb to 5100 direct NEMEW and hold, continue climb-in-hold to 5100.

AWOS-3 <b>118.325</b>	BIG SKY APP CON <b>119.6 269.4</b>	UNICOM <b>122.7 (CTAF) 0</b>
--------------------------	---------------------------------------	---------------------------------



ELEV 2537

TDZE 2537

MIRL Rwy 11-29 0

5 NM Holding Pattern		ZURMU	YEPDU	CUSMU 1.7 NM to RW11	5100	NEMEW
5100 ← 289° 109° →			4200			*LNNAV only
GP 3.00° TCH 40			4200	*3100		
		7.9 NM	3.4 NM	0.6 NM	1.1 NM	
CATEGORY	A	B	C	D		
LPV DA	2787-7/8 250 (300-7/8)					
LNNAV/ VNAV DA	2851-1 314 (400-1)					
LNNAV MDA	2920-1	383 (400-1)	2920-1½	383 (400-1½)		
CIRCLING	3060-1	523 (600-1)	3100-1½ 563 (600-1½)	3220-2¼ 683 (700-2¼)		