

APP CRS  
**198°**

Rwy Idg  
TDZE  
Apt Elev

**3530**  
**974**  
**974**

**RNAV (GPS) RWY 20**

WADSWORTH MUNI (3G3)

RNP APCH.

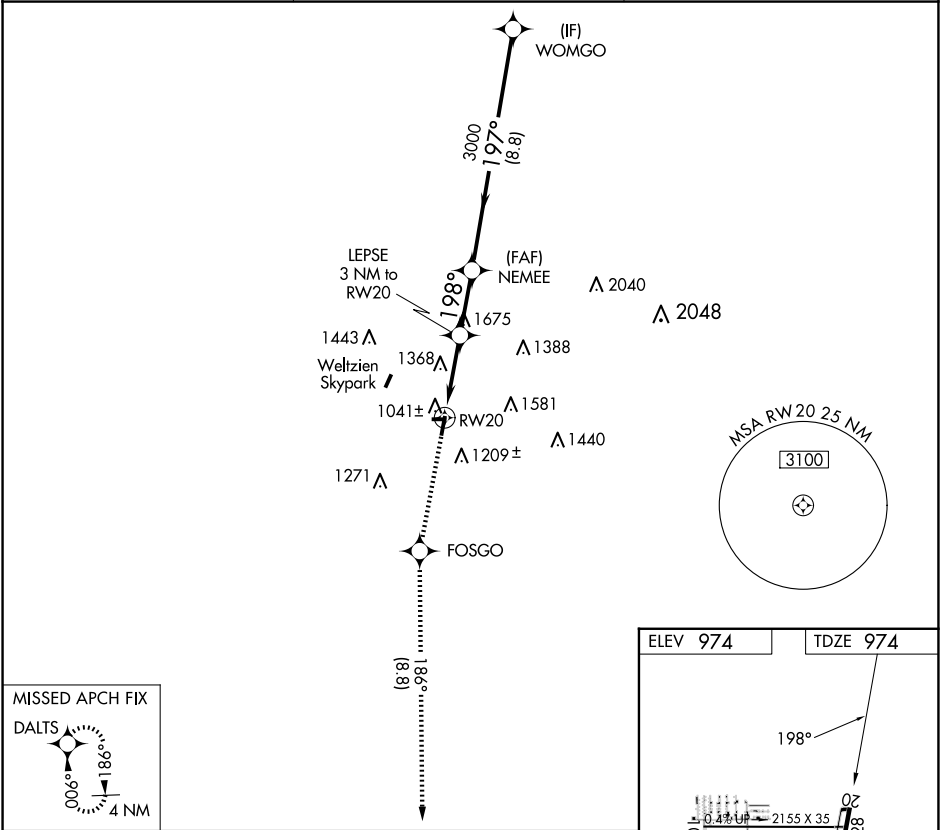
▼

NA

Rwy 20 helicopter visibility reduction below 1 SM NA. Procedure NA at night.  
Circling NA west of Rwy 2-20. Use Wooster altimeter setting, when not received, use Akron-Canton Rgnl altimeter setting and increase all MDA 40 feet and LNAV visibility Cat C ½ SM.

MISSED APPROACH: Climb to 3100 direct FOSGO and on track 186° to DALTS and hold.

BJJ ASOS <b>118.075</b>	CLEVELAND APP CON ★ <b>125.5 371.875</b>	UNICOM <b>122.8 (CTAF) 0</b>
----------------------------	---	---------------------------------



MISSED APCH FIX

DALTS

3100

FOSGO

DALTS

fr 186°

VGSI and descent angles not coincident (VGSI Angle 3.00/TCH 43).

LEPSE 3 NM to RW20

NEMEE

WOMGO

3000

197°

3000

198°

2120

3.50°

TCH 30

3 NM

2.4 NM

8.8 NM

CATEGORY	A	B	C	D
LNAV MDA	1720-1 746 (800-1)	1720-1¼ 746 (800-1¼)	1720-2 746 (800-2)	NA
CIRCLING	1720-1 746 (800-1)	1760-1¼ 786 (800-1¼)	1980-3 1006 (1100-3)	NA

ELEV 974

TDZE 974

198°

0.4

2155 X 35

02

28

3530 X 75

2

MRL Rwy 2-20 0