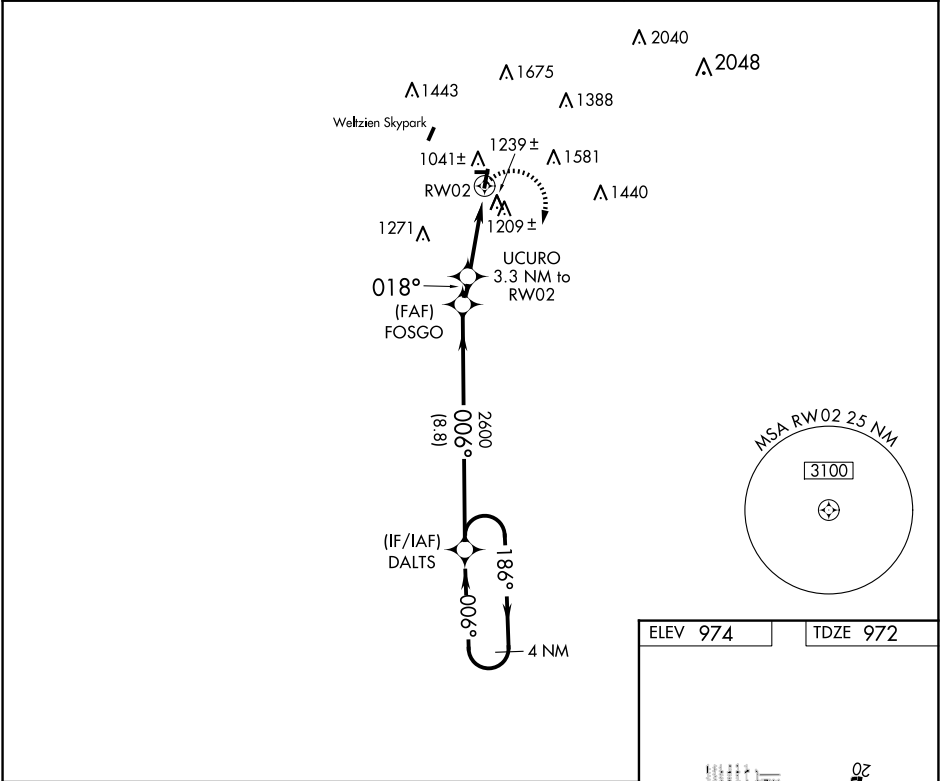


APP CRS	Rwy Idg	3400
018°	TDZE	972
	Apt Elev	974

RNAV (GPS) RWY 2

WADSWORTH MUNI (3G3)

RNP APCH.		MISSED APPROACH: Climbing right turn to 3100 direct DALTS and hold.
<div><div></div><div>NA</div></div> <div>Rwy 2 helicopter visibility reduction below 1 SM NA. Procedure NA at night. Circling NA west of Rwy 2-20. Use Wooster altimeter setting, when not received, use Akron-Canton Rgnl altimeter setting and increase all MDA 40 feet and LNAV visibility Cat C <math>\frac{1}{8}</math> SM, Circling Cat B <math>\frac{1}{4}</math> SM.</div>		
BJJ ASOS 118.075	CLEVELAND APP CON ★ 125.5 371.875	UNICOM 122.8 (CTAF) 0



4 NM Holding Pattern		DALTS		3100	DALTS
3100 ← 186°		006° →		006°	
VGSI and descent angles not coincident (VGSI Angle 3.00/TCH 37).		FOSGO		UCUR0	
		2600		3.50° TCH 30	
		018°		2220	
		8.8 NM		1 NM	3.3 NM
CATEGORY	A	B	C	D	
LNAV MDA	1620-1	648 (700-1)	1620-17 $\frac{1}{8}$ 648 (700-17 $\frac{1}{8}$ )	NA	
CIRCLING	1660-1 686 (700-1)	1760-1 786 (800-1)	1980-3 1006 (1100-2)	NA	

