
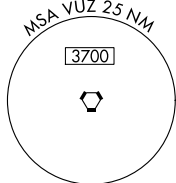
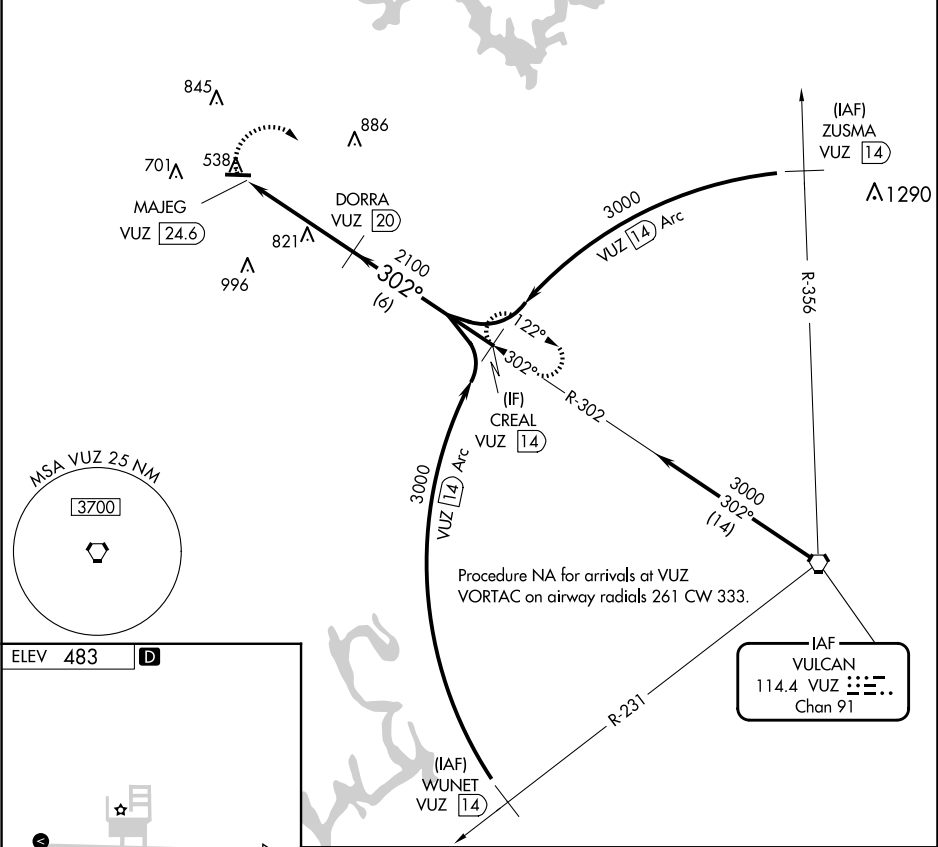



VORTAC VUZ	APP CRS	Rwy Idg	N/A
114.4	302°	TDZE	N/A
Chan 91		Apt Elev	483

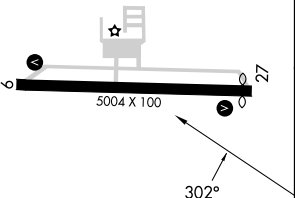
VOR/DME-A  
WALKER COUNTY/BEVILL FLD (JF'X)



 When local altimeter setting not received, use Birmingham altimeter setting and increase all MDA 120 feet and Cat C/D visibility ¼ mile.	MISSED APPROACH: Climbing right turn to 3000 on VUZ VORTAC R-302 to CREAL/14 DME and hold.
--	--

AWOS-3PT 119.225	BIRMINGHAM APP CON 127.675 338.2	GCO 121.725	UNICOM 123.075 (CTAF) 
---------------------	-------------------------------------	----------------	--



ELEV 483 



MIRL Rwy 9-27   
REIL Rwy 9 and 27 

	3000	CREAL VUZ [14]		3000	CREAL VUZ [14]
	VUZ R-302				
	MAJEG VUZ [24.6]	DORRA VUZ [20]	2100	302°	3000
			4.6 NM	6 NM	
CATEGORY	A	B	C	D	
CIRCLING	1160-1 677 (700-1)	1160-1¼ 677 (700-1¼)	1160-2 677 (700-2)	1360-2¾ 877 (900-2¾)	

SE-4, 10 JUL 2025 to 07 AUG 2025

SE-4, 10 JUL 2025 to 07 AUG 2025