
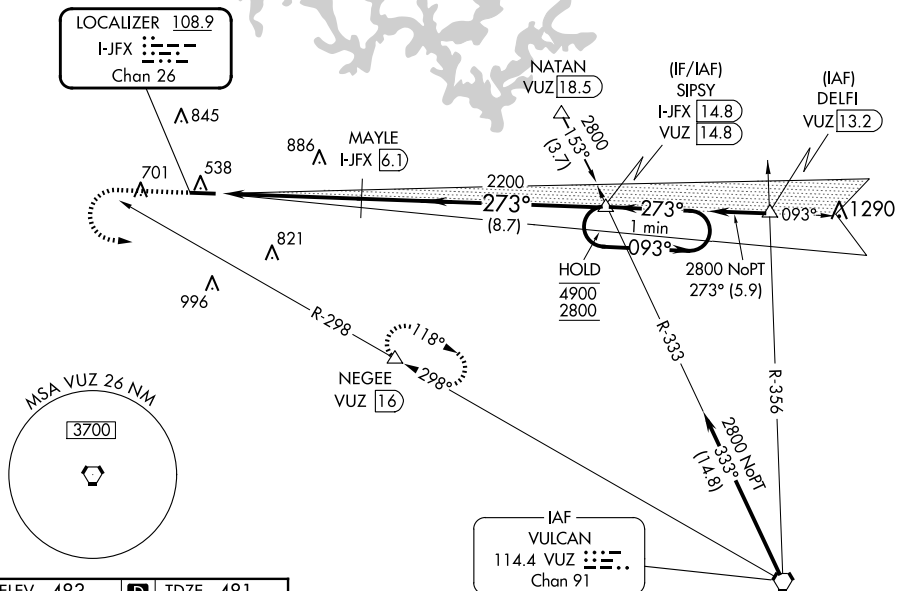


ILS or LOC RWY 27
WALKER COUNTY/BEVILL FLD (JFX)

	Rwy 27 helicopter visibility reduction below $\frac{3}{4}$ SM NA. VDP NA when using Birmingham altimeter setting. When local altimeter setting not received, use Birmingham altimeter setting: increase DA to 892 feet and S-ILS all Cats visibilities $\frac{1}{4}$ SM; increase all MDAs 120 feet and S-LOC Cats C and D and Circling Cats C and D visibility $\frac{1}{4}$ SM.
---	---

MISSED APPROACH: Climb to 1500 then climbing left turn to 3000 on VUZ VORTAC R-298 to NEGEE/16 DME and hold.

UNICOM
123.075 (CTAF) **L**



1500 ↑	3000 ↖	VUZ R-298	NEGEE △	MAYLE I-JFX (6.1)	SIPSY I-JFX (14.8)	One Minute Holding Pattern
*LOC only						
CATEGORY	A		B		C	
S-ILS 27	788-7/8				307 (400-7)	
S-LOC 27	1040-1 559 (600-1)		1040-1 5/8 559 (600-1 5/8)		1360-2 3/4 877 (900-2 3/4)	
CIRCLING	1040-1 557 (600-1)		1080-1 597 (600-1)		1160-2 677 (700-2)	