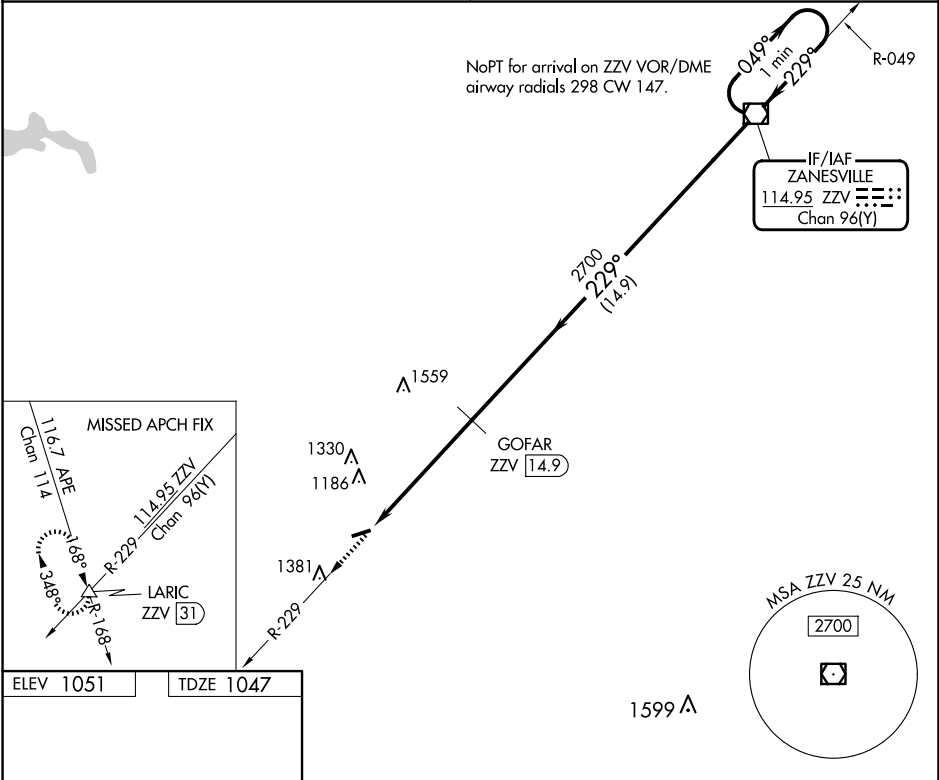


VOR/DME ZZV	APP CRS	Rwy Idg	3498
114.95	229°	TDZE	1047
Chan 96(Y)		Apt Elev	1051

VOR/DME RWY 26
ED NEWLON FLD (I86)

⚠ NA Visibility reduction by helicopters NA. Use Zanesville altimeter setting; when not received, use Lancaster altimeter setting and increase all MDA 20 feet. Procedure NA at night.	MISSED APPROACH: Climb to 3000 via ZZV VOR/DME R-229 to LARIC INT/ZZV 31 DME and hold.
---	--

INDIANAPOLIS CENTER 124.45 323.275	UNICOM 122.8 (CTAF) 0
---------------------------------------	--------------------------



ELEV 1051	TDZE 1047
-----------	-----------

