

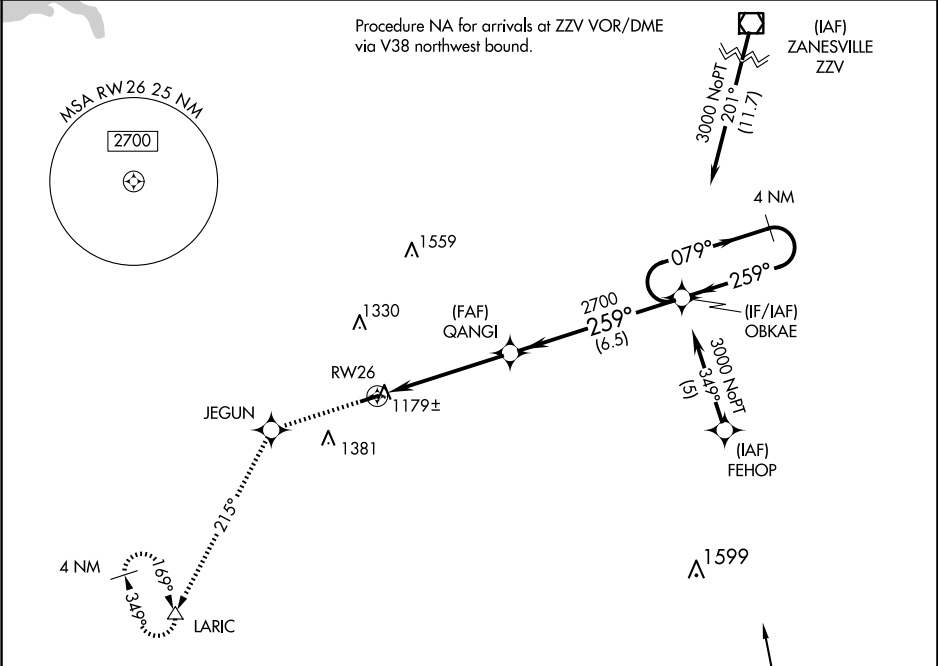
APP CRS	Rwy Idg	3498
259°	TDZE	1047
	Apt Elev	1051

RNAV (GPS) RWY 26

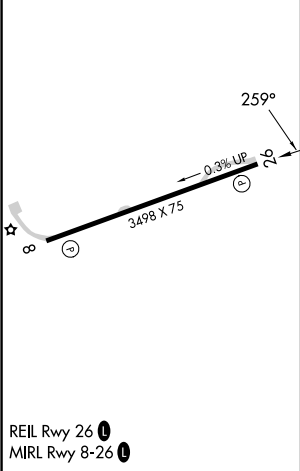
ED NEWLON FLD (I86)

<div><div>▽</div><div>NA</div></div> <div>DME/DME RNP-0.3 NA. Visibility reduction by helicopters NA. Use Zanesville altimeter setting; when not received, use Lancaster altimeter setting and increase all MDA 20 feet. Procedure NA at night.</div>	<div>MISSED APPROACH: Climb to 3000 direct JEGUN and via 215° track to LARIC and hold.</div>
---	--

INDIANAPOLIS CENTER 124.45 323.275	UNICOM 122.8 (CTAF) 0
---------------------------------------	--------------------------



ELEV 1051	TDZE 1047
-----------	-----------



3000	JEGUN	215° tr	LARIC	VGSI and descent angles not coincident (VGSI Angle 4.00/TCH 28).	4 NM Holding Pattern
				OBKAE	
				QANGI	
				RW26	
				2700	
				5 NM	6.5 NM
CATEGORY	A	B	C	D	
LNAV MDA	1620 - 1	573 (600-1)	1620 - 1½ 573 (600-1½)	NA	
CIRCLING	1620 - 1	569 (600-1)	1620 - 1½ 569 (600-1½)	NA	