

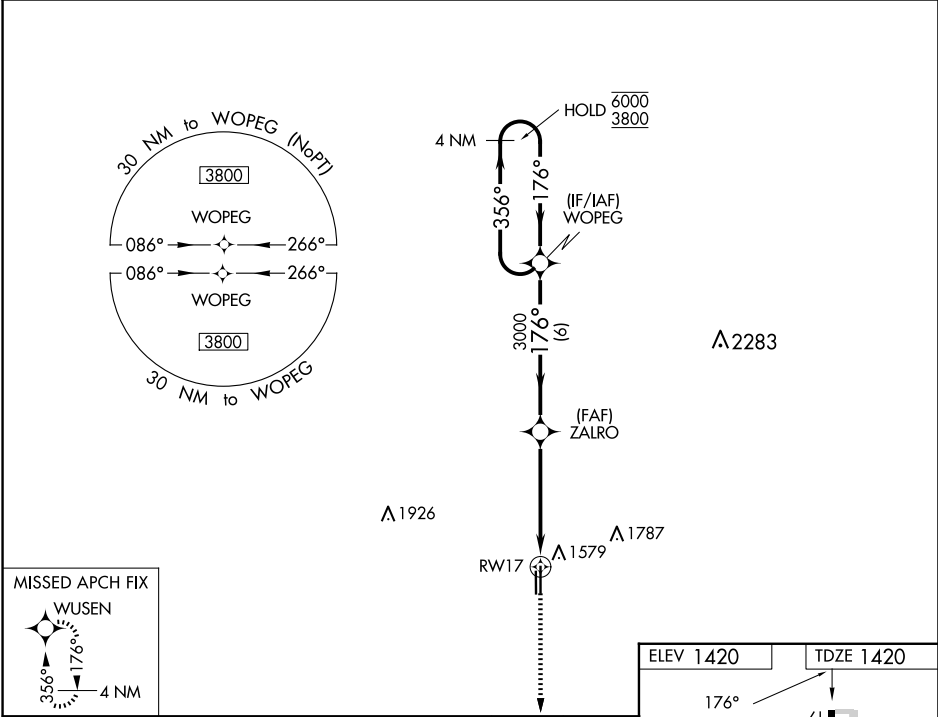
APP CRS	APP CRS	Rwy Idg	5600
CH 45643	176°	TDZE	1420
W17A		Apt Elev	1420

RNAV (GPS) RWY 17

EL RENO RGNL (RQO)

RNP APCH-GPS.	MISSED APPROACH: Climb to 3800 direct WUSEN and hold.
<div><div>▼</div><div>▲</div></div> <div>Circling NA to Rwy 18 and 36. Circling Rwy 35 NA at night. Rwy 17 helicopter visibility reduction below ¾ SM NA. For uncompensated Baro-VNAV systems, LNAV/VNAV NA below -17°C or above 54°C.</div>	

AWOS-3 118.475	OKE CITY APP CON 124.6 266.8	UNICOM 122.8 (CTAF) 0
-------------------	---------------------------------	--------------------------



4 NM Holding Pattern				
<div>WOPEG</div> <div>6000 ← 356°</div> <div>3800 → 176°</div> <div>GP 3.00°</div> <div>TCH 40</div> <div>3000</div> <div>ZALRO</div> <div>1.9 NM to RW17</div> <div>RW17</div> <div>6 NM</div> <div>2.9 NM</div> <div>1.9</div>				
CATEGORY	A	B	C	D
LPV DA	1670-¾ 250 (300-¾)			
LNAV/VNAV DA	1754-1 334 (400-1)			
LNAV MDA	1860-1	440 (500-1)	1860-1¼	440 (500-1¼)
CIRCLING	1900-1	480 (500-1)	2140-2	2140-2¼
			720 (800-2)	720 (800-2¼)

