

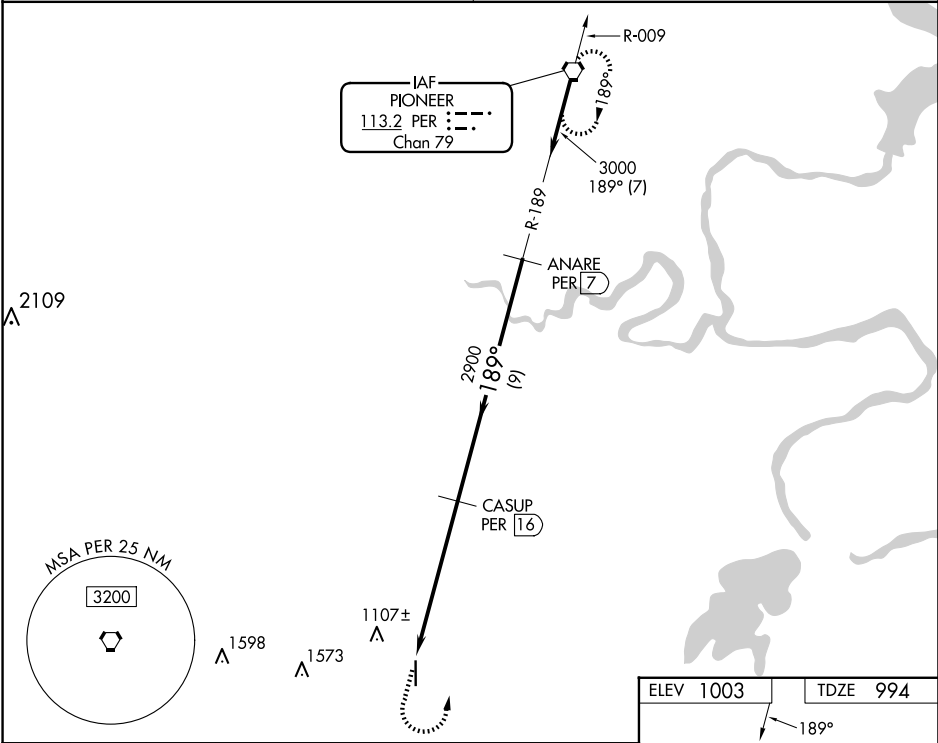
VORTAC PER	APP CRS	Rwy Idg
<b>113.2</b>	<b>189°</b>	<b>5103</b>
Chan <b>79</b>		<b>994</b>
		Apt Elev <b>1003</b>

VOR RWY 17  
PERRY MUNI (F22)

Obtain local altimeter setting on CTAF; when not received, use Ponca City altimeter setting. DME required.

MISSED APPROACH: Climb to 2000 then climbing left turn to 3000 direct PER VORTAC and hold.

KANSAS CITY CENTER <b>127.8 319.1</b>	UNICOM <b>122.8 (CTAF) 0</b>
--	---------------------------------



	2000	3000	PER	
	↑	↘	⬢	
				ANARE PER 7
				3000
				Procedure Turn NA
				2900
				2.99°
				6 NM
				9 NM
CATEGORY	A	B	C	D
S-17	1500-1 506 (500-1)	1500-1¼ 506 (500-1¼)	1500-1½ 506 (500-1½)	NA
CIRCLING	1500-1 497 (500-1)	1500-1¼ 497 (500-1¼)	1620-1¾ 617 (700-1¾)	NA
PONCA CITY ALTIMETER SETTING MINIMUMS				
S-17	1560-1 566 (600-1)	1560-1¼ 566 (600-1¼)	1560-1½ 566 (600-1½)	NA
CIRCLING	1560-1 557 (600-1)	1560-1¼ 557 (600-1¼)	1680-2 677 (700-2)	NA

