

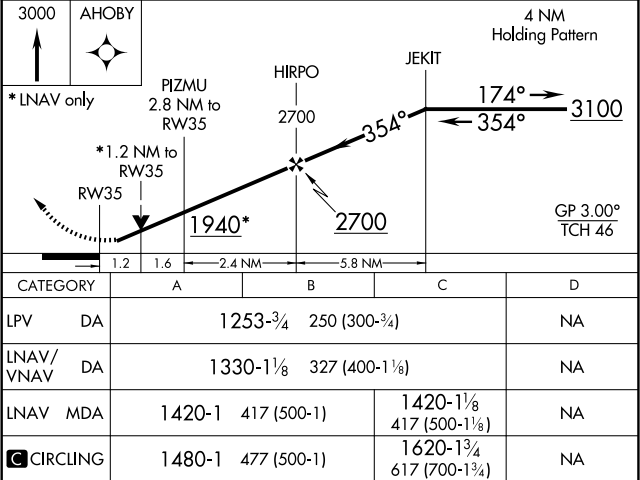
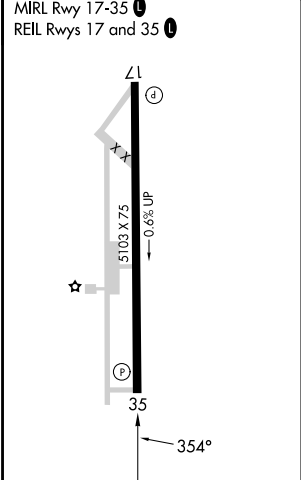
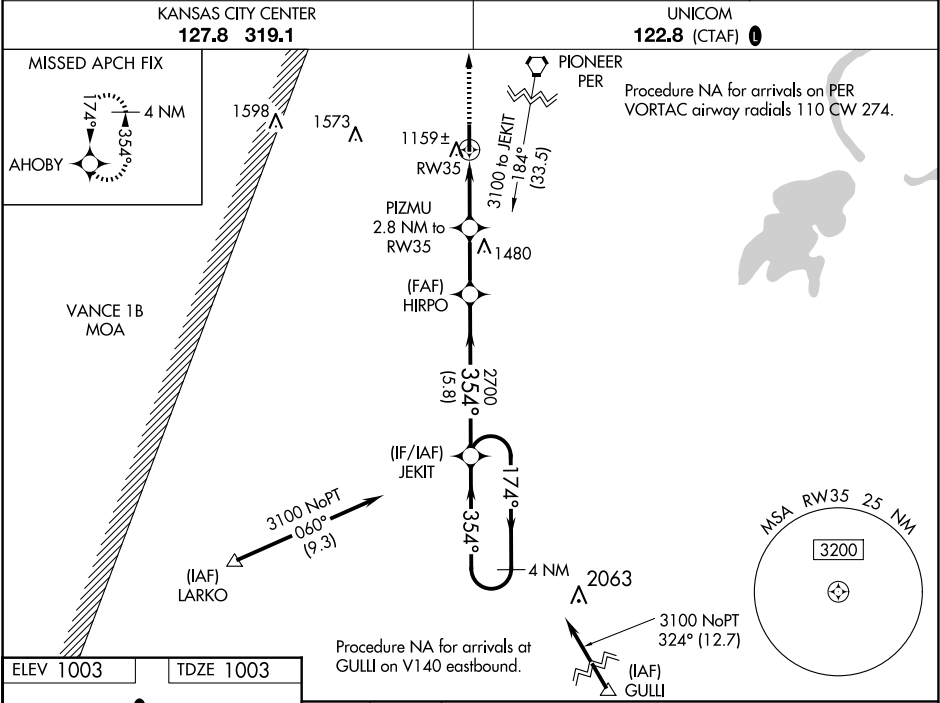
WAAS CH 61140 W35A	APP CRS 354°	Rwy Idg TDZE 1003 Apt Elev 1003
--	------------------------	---

RNAV (GPS) RWY 35
PERRY MUNI (F22)

NA

For uncompensated Baro-VNAV systems, procedure NA below -16°C (4°F) or above 54°C (130°F). DME/DME RNP-0.3 NA. Baro-VNAV and VDP NA when using Ponca City altimeter setting. Rwy 35 helicopter visibility reduction below ¾ SM NA. Obtain local altimeter setting on CTAF; when not received, use Ponca City altimeter setting and increase all DA 53 feet and all visibility ¼ SM, increase all MDAs 60 feet and Cat C visibility ¼ SM.

MISSED APPROACH:
Climb to 3000 direct AHOBY and hold.



SC-1, 10 JUL 2025 to 07 AUG 2025

SC-1, 10 JUL 2025 to 07 AUG 2025