

WAAS CH <b>72921</b> <b>W17A</b>	APP CRS <b>174°</b>	Rwy Idg TDZE <b>994</b> Apt Elev <b>1002</b>
--	------------------------	--

RNAV (GPS) RWY 17

PERRY MUNI (F22)

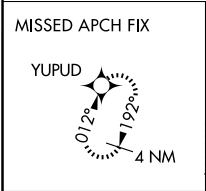
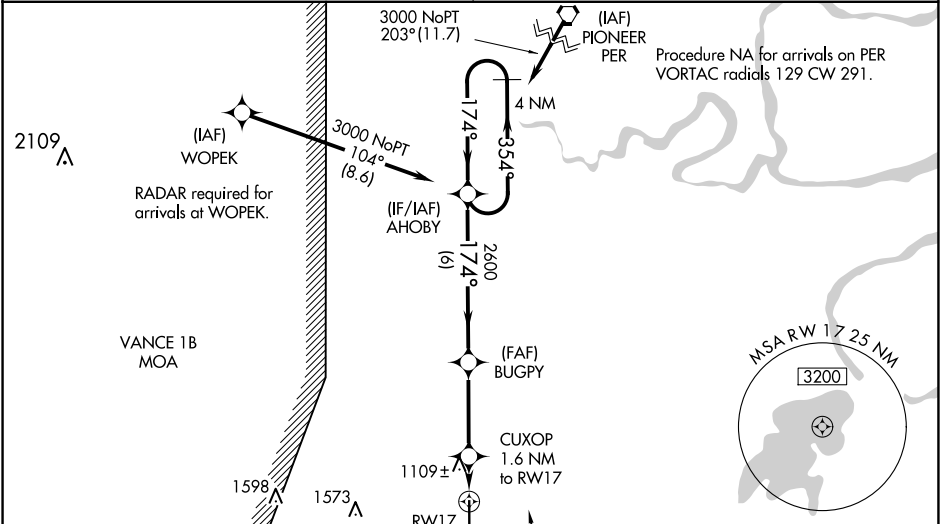
RNP APCH.

NA

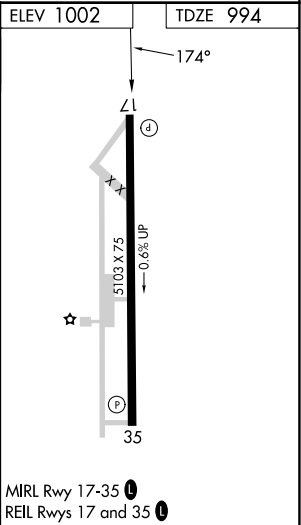
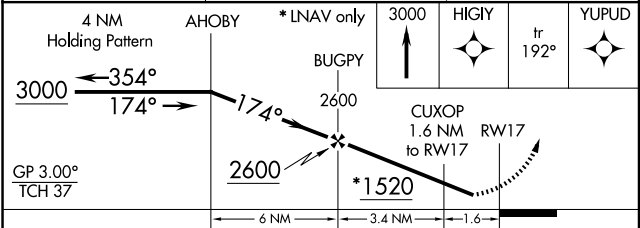
Baro-VNAV NA when using KPNC altimeter setting. For uncompensated Baro-VNAV systems, LNAV/VNAV NA below -16°C or above 54°C. When VGSI inop, procedure NA at night. Rwy 17 helicopter visibility reduction below 1 SM NA. Obtain local altimeter setting on CTAF; when not received, use Ponca City altimeter setting and increase all DA 53 feet, all MDA 60 feet and increase LNAV/VNAV all Cats and LNAV Cat C visibility ¼ mile.

MISSED APPROACH: Climb to 3000 direct HIGHY and on track 192° to YUPUD and hold.

KANSAS CITY CENTER <b>127.8 319.1</b>	UNICOM <b>122.8 (CTAF) 0</b>
--	---------------------------------



Procedure NA for arrivals at GULLI on V140 eastbound.



CATEGORY	A	B	C	D
LPV DA	1244-1	250 (300-1)		NA
LNAV/VNAV DA	1434-1½	440 (500-1½)		NA
LNAV MDA	1360-1	366 (400-1)	1360-1⅛ 366 (400-1⅛)	NA

SC-1, 10 JUL 2025 to 07 AUG 2025

SC-1, 10 JUL 2025 to 07 AUG 2025