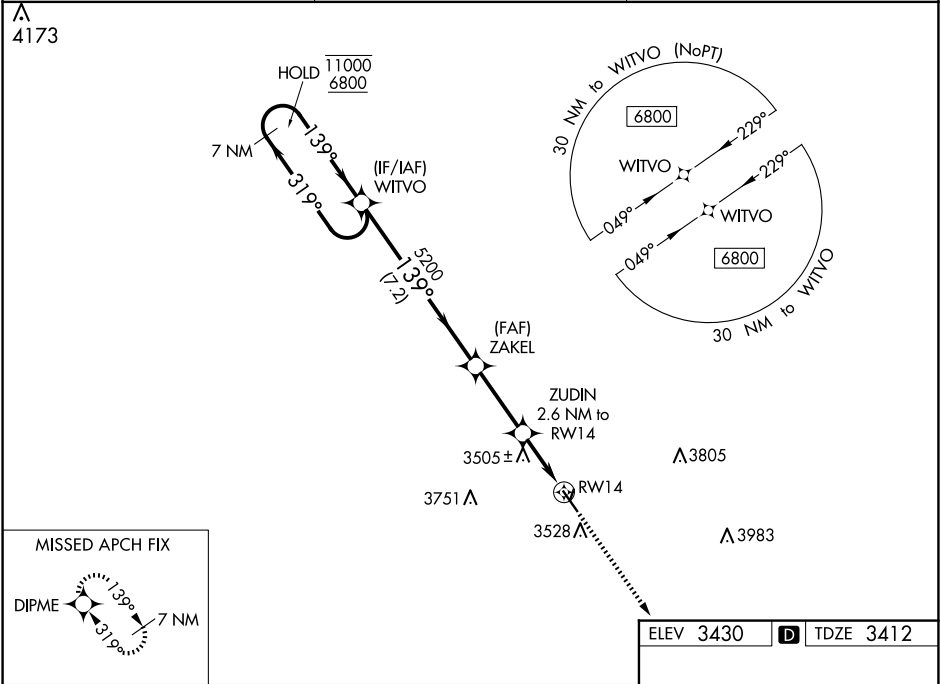


WAAS CH 77942 W14A	APP CRS 139°	Rwy Ldg TDZE Apt Elev 5000 3412 3430
--	------------------------	--

RNAV (GPS) RWY 14
CHEYENNE COUNTY MUNI (SYF)

RNP APCH. CIRCLING NA to Rwys 9, 27, 18 and 36. Rwy 14 helicopter visibility reduction below ¾ SM NA. For uncompensated Baro-VNAV systems, LNAV/VNAV NA below -21°C or above 54°C.	MISSED APPROACH: Climb to 6800 direct DIPME and hold, continue climb-in-hold to 6800.
---	---

AWOS-3P 118.925	DENVER CENTER 132.7 226.675	UNICOM 122.8 (CTAF) 1
---------------------------	---------------------------------------	---------------------------------



7 NM Holding Pattern		WITVO		ZAKEL		ZUDIN 2.6 NM to RW14		DIPME	
11000 6800		← 319° 139° →		5200		*1 NM to RW14		*LNAV only.	
GP 3.00° TCH 50		7.2 NM		3 NM		1.6 NM		1 NM	
CATEGORY	A	B	C	D					
LPV DA	3662-1	250 (300-1)				NA			
LNAV/VNAV DA	3662-1	250 (300-1)				NA			
LNAV MDA	3760-1	348 (400-1)				NA			
CIRCLING	3860-1 430 (500-1)	3880-1 450 (500-1)	3900-1½ 470 (500-1½)				NA		

NC-2, 10 JUL 2025 to 07 AUG 2025

NC-2, 10 JUL 2025 to 07 AUG 2025