

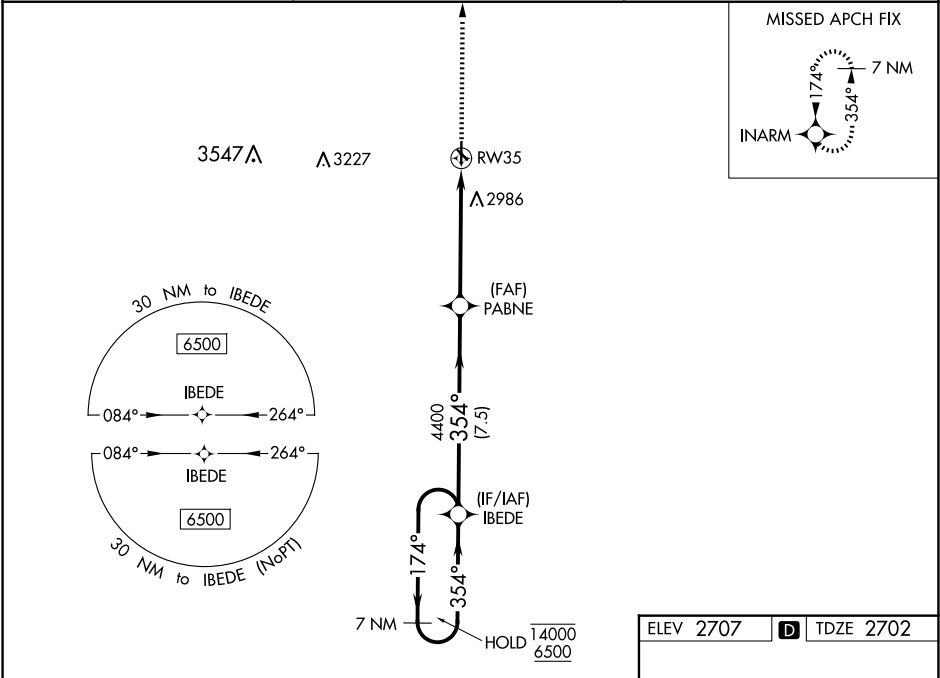
WAAS CH <b>72837</b> <b>W35A</b>	APP CRS <b>354°</b>	Rwy ldg TDZE Apt Elev	<b>3501</b> <b>2702</b> <b>2707</b>
--	------------------------	-----------------------------	---

RNAV (GPS) RWY 35

OBERLIN MUNI (OIN)

RNP APCH-GPS.	MISSED APPROACH: Climb to 6500 direct INARM and hold, continue climb-in-hold to 6500.
<div><div></div><div></div></div> <div>Circling to Rwy 12, 17, 30 NA at night. For uncompensated Baro-VNAV systems, LNAV/VNAV NA below -20°C or above 54°C.</div>	

AWOS-3PT <b>119.225</b>	DENVER CENTER <b>132.7 226.675</b>	UNICOM <b>122.8 (CTAF) 0</b>
----------------------------	---------------------------------------	---------------------------------



7 NM Holding Pattern		IBEDE	6500 INARM	
14000 ← 174° 6500 → 354°		PABNE	4400	
GP 3.00° TCH 43		4400	1.8 NM to RW35	
7.5 NM		3.5 NM	1.8 NM	
CATEGORY	A	B	C	D
LPV DA	2902-1 200 (200-1)			NA
LNAV/VNAV DA	3300-1 3/4 598 (600-1 3/4)			NA
LNAV MDA	3300-1 598 (600-1)		3300-1 3/4 598 (600-1 3/4)	NA
CIRCLING	3300-1 593 (600-1)	3340-1 633 (700-1)	3340-1 3/4 633 (700-1 3/4)	NA

4501 X 60

2832 X 130

0.9% UP

1.2% UP

35

354°

MIRL Rwy 17-35