

WAAS
CH **86603**
W20A

APP CRS
200°

Rwy Idg
TDZE **3132**
Apt Elev **3134**

RNAV (GPS) RWY 20

HUGOTON MUNI (HQQ)

RNP APCH-GPS.

▼

▲

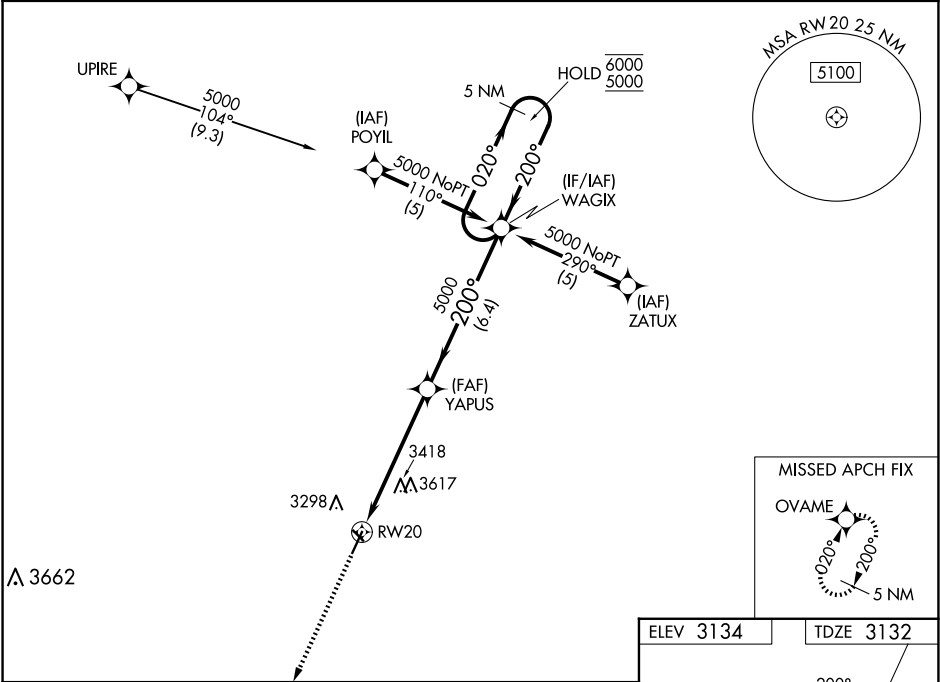
Circling Rwy 13, 31 NA at night. Rwy 20 helicopter visibility reduction below ¾ SM NA. For uncompensated Baro-VNAV systems, procedure NA below -21°C or above 54°C.

MISSED APPROACH: Climb to 5000 direct OVAME and hold.

AWOS-3PT
118.6

KANSAS CITY CENTER
134.0 257.625

UNICOM
122.8 (CTAF) 0



5000

OVAME

VGSI and RNAV glidepath not coincident (VGSI Angle 3.00/TCH 29).

YAPUS 5000

WAGIX 5 NM Holding Pattern

2.2 NM to RW20

200°

020°

6000 5000

GP 3.00° TCH 45

CATEGORY	A	B	C	D
LPV DA	3382-1	250 (300-1)		NA
LNAV/VNAV DA	3580-1⅓	448 (500-1⅓)		NA
LNAV MDA	3860-1 728 (800-1)	3860-2 728 (800-2)		NA
CIRCLING	3860-1 726 (800-1)	3980-2½ 846 (900-2½)		NA

HUGOTON, KANSAS

Orig-C 23FEB23

ELEV 3134

TDZE 3132

200°

020°

303° X 30

31

5000 X 7.5

2

HIRL Rwy 2-20 0