

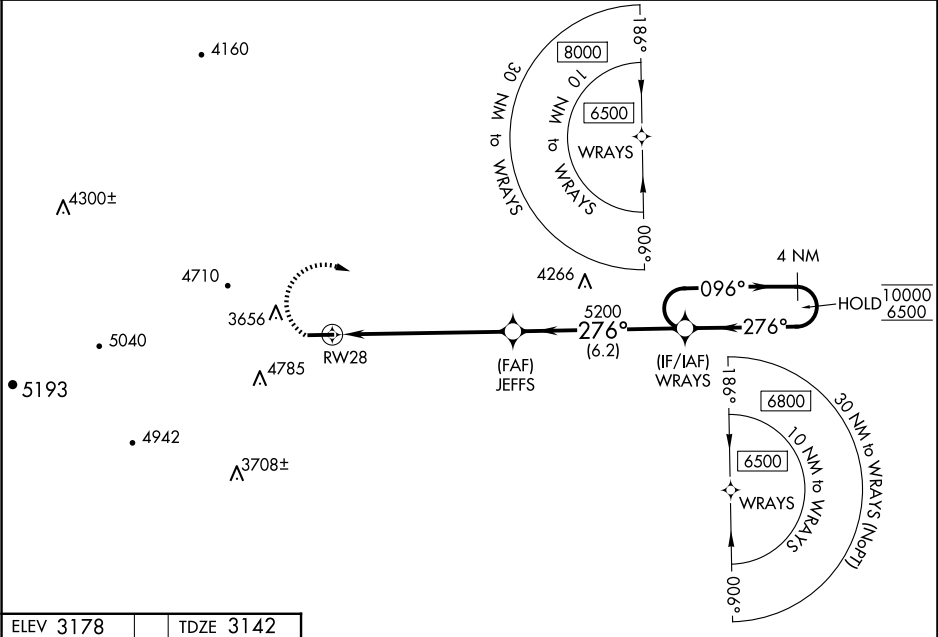
WAAS CH 70437 W28A	APP CRS 276°	Rwy Idg TDZE Apt Elev	5002 3142 3178
--	------------------------	-----------------------------	---

RNAV (GPS) RWY 28

ASHE COUNTY (GEV)

RNP APCH - GPS.		MISSED APPROACH: Climbing right turn to 6500 direct WRAYS and hold, continue climb-in-hold to 6500. *Missed approach requires minimum climb of 350 feet per NM to 5700.
<div><div><div></div><div></div><div></div></div></div>	Circling to Rwy 10 NA at night. For uncompensated Baro-VNAV systems, LNAV/VNAV NA below 14°C or above 54°C.	
<div><div></div><div></div></div>	-16°C	

AWOS-3 120.675	ATLANTA CENTER 125.15 263.0	UNICOM 122.8 (CTAF) 0
--------------------------	---------------------------------------	---------------------------------



ELEV 3178	TDZE 3142
-----------	-----------

