

LOC/DME I-JUH	APP CRS	Rwy Idg	5002
109.35	276°	TDZE	3142
Chan 30(Y)		Apt Elev	3178

LOC RWY 28

ASHE COUNTY (GEV)

DME required.

▼

▲

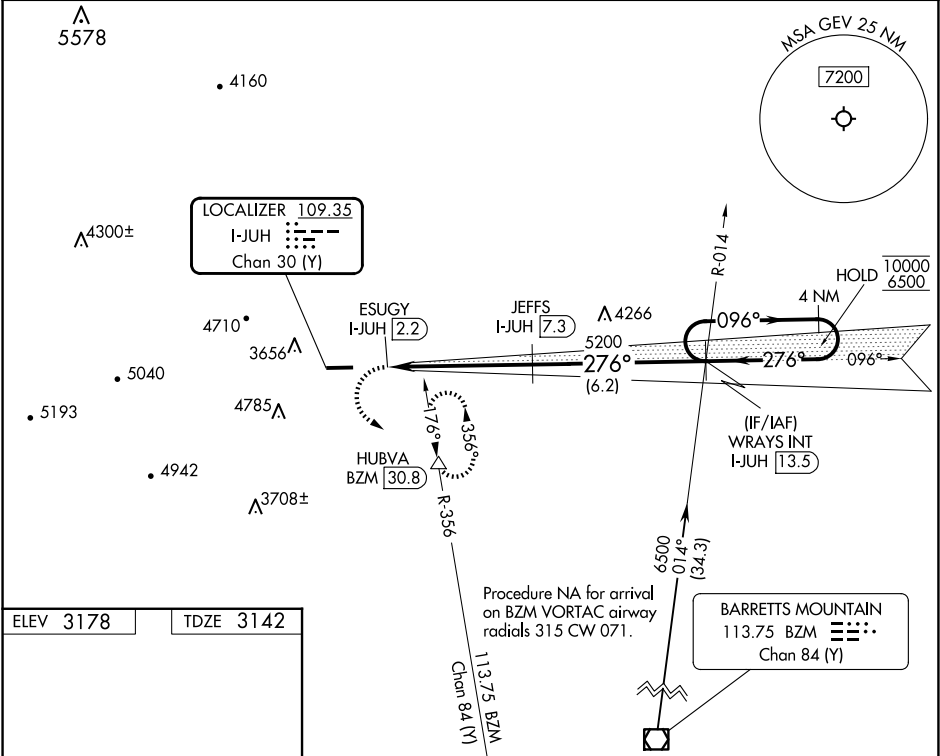
❄

Circling to Rwy 10 NA at night.

-16°C

MISSED APPROACH: Climbing left turn to 7200 on heading 096° and on BZM VOR/DME R-356 to HUBVA/BZM 30.8 DME and hold, continue climb-in-hold to 7200.

AWOS-3 120.675	ATLANTA CENTER 125.15 263.0	UNICOM 122.8 (CTAF) 0
-------------------	--------------------------------	--------------------------



ELEV 3178 TDZE 3142

5002 X 75 1.8% UP 276°

7200 hdg 096°

BZM R-356

HUBVA

JEFFS I-JUH 7.3

ESUGY I-JUH 2.2

5200

3.00° TCH 48

1.3 1.3 NM 3.9 NM 6.2 NM

WRAYS INT I-JUH 13.5

4 NM Holding Pattern

10000 6500

096° 276°

CATEGORY	A	B	C	D
S-LOC 28	3980-1½ 838 (900-1½)		3980-2½ 838 (900-2½)	
CIRCLING	4280-1½ 1102 (1200-1½)		5140-3 1962 (2000-3)	5180-3 2002 (2100-3)

REIL Rwy 28 0 MRL Rwy 10-28 0