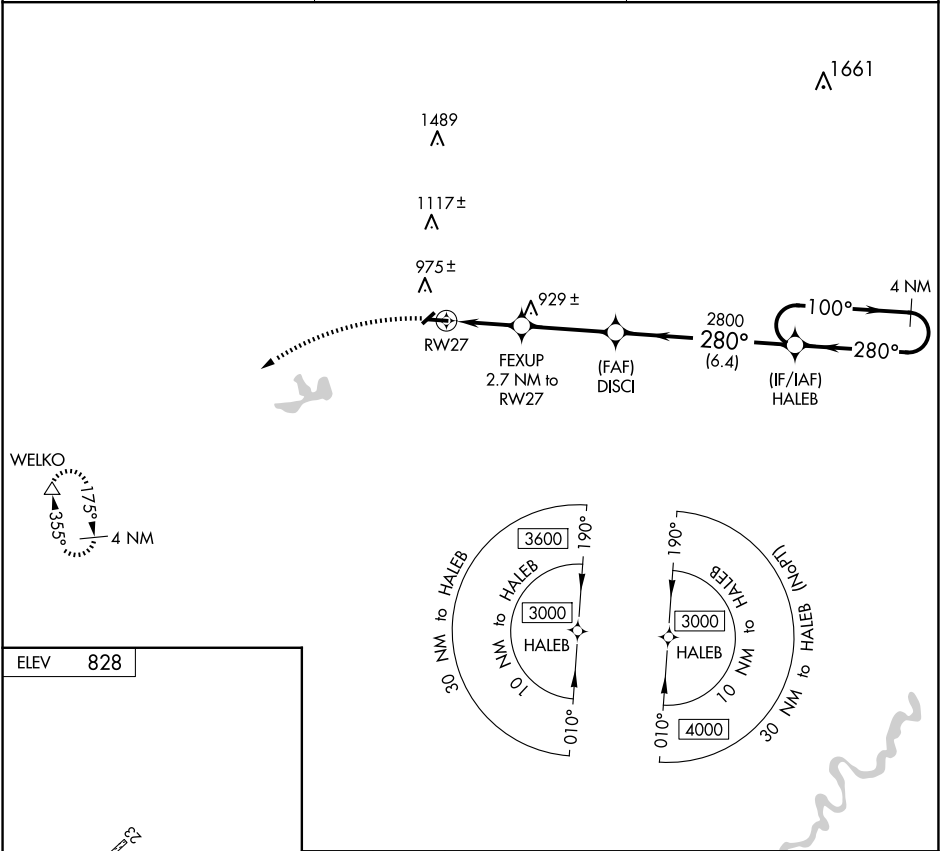
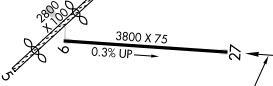

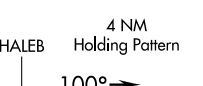
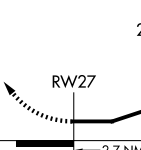
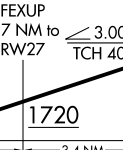
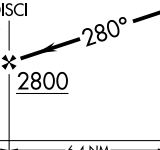
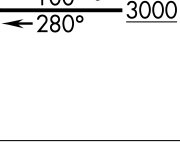



APP CRS 280°	Rwy Idg TDZE Apt Elev	N/A N/A 828	RNAV (GPS)-A BALDWIN MUNI (7D3)
-----------------	-----------------------------	-------------------	------------------------------------

<div>▼</div> <div>▲ NA</div>	Circling NA to Rwy 5 and 23. DME/DME RNP-0.3 NA. Helicopter visibility reduction below 1 SM NA. Use Fremont Muni altimeter setting. Procedure NA at night.	MISSED APPROACH: Climbing left turn to 3600 direct WELKO and hold.
------------------------------	--	--

FFX AWOS-3 118.775	MINNEAPOLIS CENTER 120.85 322.35	CTAF 122.9
-----------------------	-------------------------------------	---------------



					
					
RW/27		FEXUP 2.7 NM to RW27	DISCI 3.00° TCH 40	HALEB	
2.7 NM		3.4 NM	6.4 NM		
CATEGORY	A		B	C	D
 CIRCLING	1400-1 572 (600-1)		1400-1½ 572 (600-1½)		NA