

APP CRS  
354°

Rwy Idg  
TDZE  
Apt Elev

4289  
2105  
2121

RNAV (GPS) RWY 35

COLUMBIA (O22)

RNP APCH.

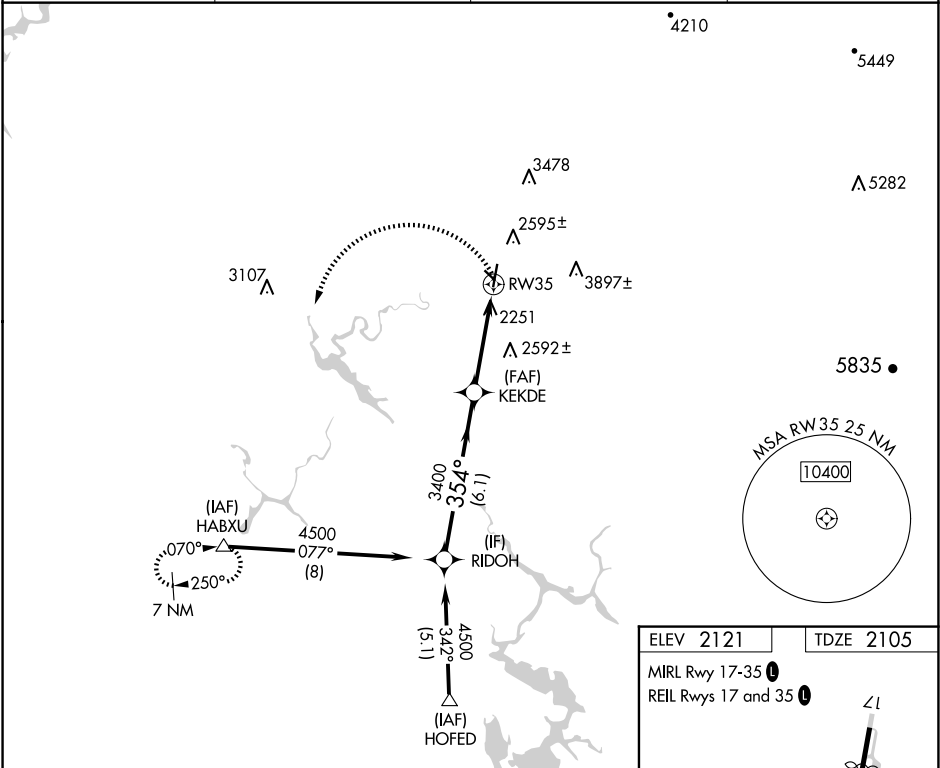
▼

⚠

Circling NA to Rwy 11 and 29. Circling NA east of Rwy 17-35. Procedure NA at night. Rwy 35 helicopter visibility reduction below 1 SM NA.

MISSED APPROACH: Climbing left turn to 7000 direct HABXU and hold, continue climb-in-hold to 7000.

AWOS-3 124.65	NORCAL APP CON 125.1 363.2 (NORTH/WEST)	OAKLAND CENTER 121.25 327.0 (EAST/SOUTH)	UNICOM 122.975 (CTAF) 0
------------------	--	---	----------------------------



ELEV 2121

TDZE 2105

MIRL Rwy 17-35 0

REIL Rwy 17 and 35 0

4273 X 75

2607 X 90

0.2% UP

1.0% UP

35

354° to RW35

Visual Segment - Obstacles.

7000

HABXU

RIDOH

4500

354°

3400

KEKDE

6.1 NM

4 NM

RW35

CATEGORY	A	B	C	D
LNAV MDA	3140-1¼ 1035 (1100-1½)	3140-1½ 1035 (1100-1½)	3140-3 1035 (1100-3)	NA
CIRCLING	3140-1¼ 1019 (1100-1½)	3140-1½ 1019 (1100-1½)	3140-3 1019 (1100-3)	NA

SW-2, 10 JUL 2025 to 07 AUG 2025

SW-2, 10 JUL 2025 to 07 AUG 2025