

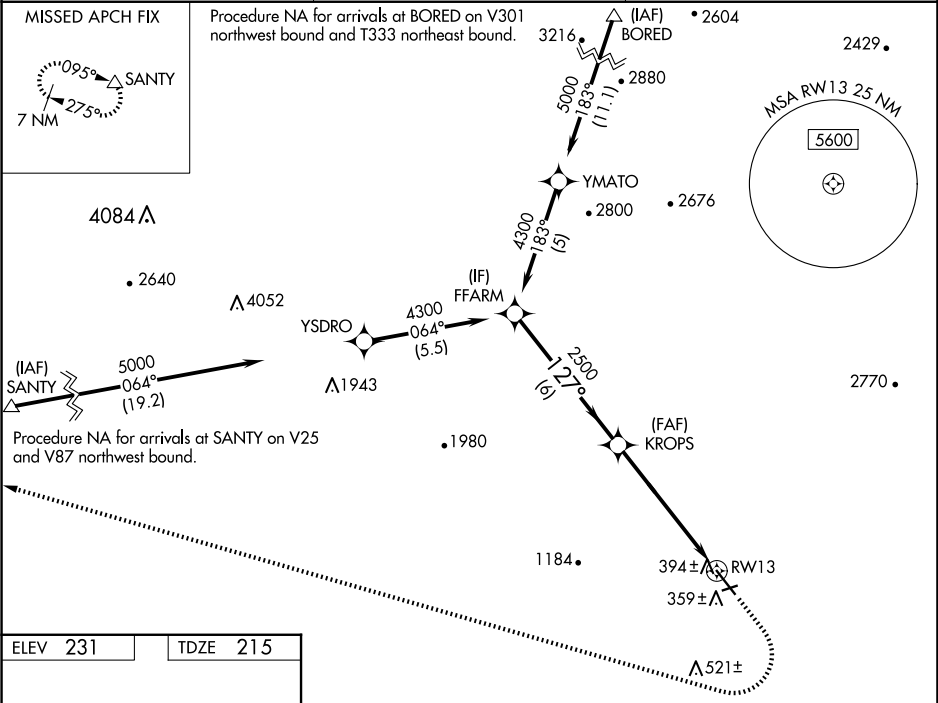
WAAS CH 70746 W13A	APP CRS 127°	Rwy Idg TDZE 215 Apt Elev 231
--	------------------------	---

RNAV (GPS) RWY 13

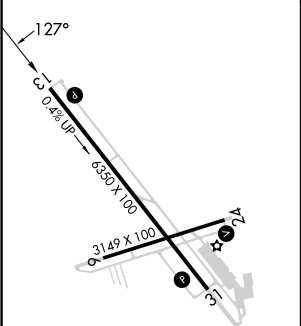
HOLLISTER MUNI (CVH)

RNP APCH - GPS.	MISSED APPROACH: (Do not exceed 200 KIAS until SENTRY) Climb to 1100 then climbing right turn to 7000 direct SENTRY and hold. *Missed approach requires minimum climb of 245 feet per NM to 1900.
<div><div></div><div>For uncompensated Baro-VNAV systems, LNAV/VNAV NA below -15°C or above 54°C.</div></div>	

AWOS-3 120.425	NORCAL APP CON 124.525 348.675	UNICOM 123.0 (CTAF) 0
--------------------------	--	---------------------------------



ELEV 231	TDZE 215
----------	----------



MIRL Rwy 6-24 and 13-31

REIL Rwy 13, 24 and 31

VGSI and RNAV glidepath not coincident (VGSI Angle 3.00/TCH 44).				1100	7000	SENTRY
FFARM				↑	↷	Δ
4300				127°		
KROPS				2500		
GP 3.70°				1.9 NM to RW13		
TCH 44				RW13		
				6 NM	3.9 NM	1.9 NM
CATEGORY	A	B	C	D		
LPV DA	535-7/8 320 (400-7/8)			NA		
LNAV/VNAV DA	1055-2 1/2 840 (900-2 1/2)			NA		
LNAV/VNAV DA*	564-1 349 (400-1)			NA		
LNAV MDA	840-1	625 (700-1)	840-1 3/4 625 (700-1 3/4)	NA		