

APP CRS  
074°

Rwy Idg  
TDZE  
Apt Elev

2794  
372  
372

RNAV (GPS) RWY 7  
BLAIRSTOWN (1N7)

RNP APCH.

▼

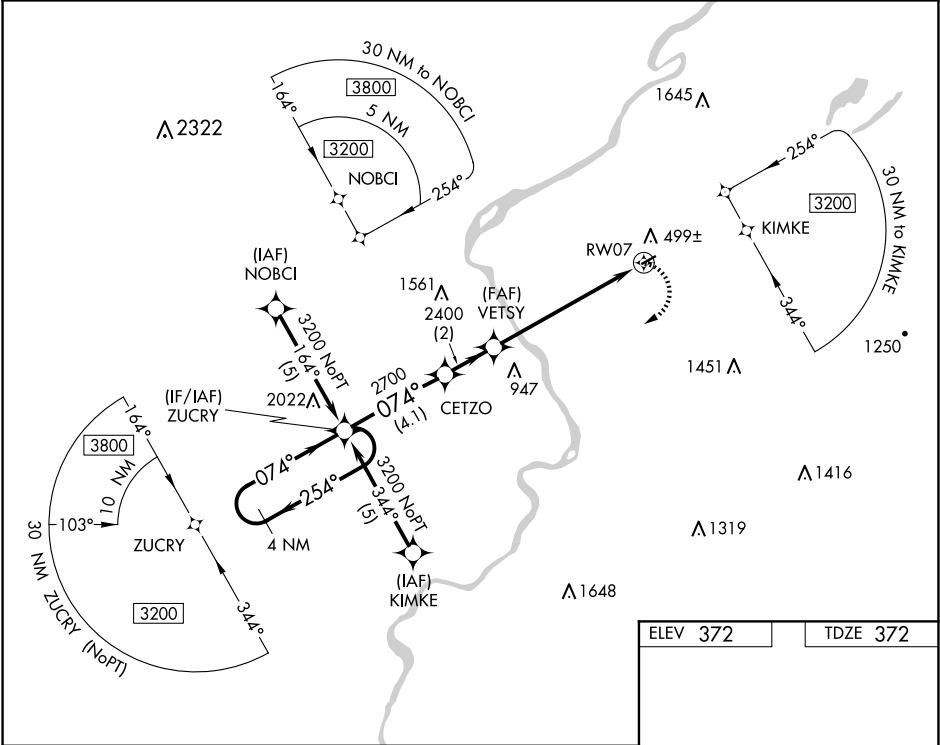
▲ NA

When local altimeter setting not received, use Lehigh Valley altimeter setting. Procedure NA at night. Rwy 7 helicopter visibility reduction below 1 SM NA.

MISSED APPROACH: Climbing right turn to 3200 direct ZUCRY and hold.

NEWARK APP CON  
127.6 379.9

UNICOM  
123.0 (CTAF) 0



4 NM Holding Pattern

ZUCRY

CETZO

VETSY

RW07

3200

2700

2400

254°

074°

074°

074°

4.1 NM

2 NM

6.2 NM

Visual Segment - Obstacles.

3200

ZUCRY

3112x70

074°

CATEGORY	A	B	C	D
LNAV MDA	1140-1 768 (800-1)	1140-1¼ 768 (800-1¼)	NA	NA
LEHIGH VALLEY ALTIMETER SETTING MINIMUMS				
LNAV MDA	1420-1¼ 1048 (1100-1¼)	1420-1½ 1048 (1100-1½)	NA	NA

ELEV 372 TDZE 372

MIRL Rwy 7-25 0