

APP CRS
254°

Rwy Idg
TDZE
Apt Elev

2877
371
372

RNAV (GPS) RWY 25

BLAIRSTOWN (1N7)

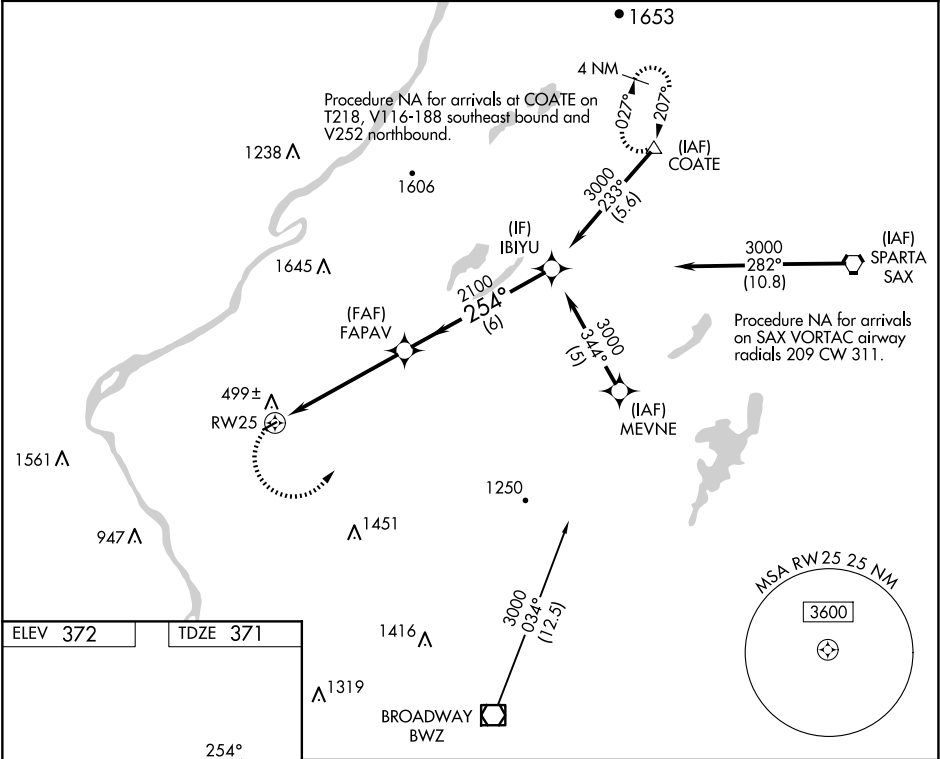
RNP APCH.

Procedure NA at night. Obtain local altimeter setting on CTAF; when not received, use Lehigh Valley Intl altimeter setting. Rwy 25 helicopter visibility reduction below 1 SM NA.

MISSED APPROACH: Climbing left turn to 3000 direct COATE and hold.

NEWARK APP CON
127.6 379.9

UNICOM
123.0 (CTAF) 0



3000

COATE

Visual Segment - Obstacles.

IBIYU

3000

RW25

FAPAV

2100

5.3 NM

6 NM

CATEGORY	A	B	C	D
LNAV MDA	1260-1¼	889 (900-1¼)	NA	
LEHIGH VALLEY INTL ALTIMETER SETTING MINIMUMS				
LNAV MDA	1540-1¼ 1169 (1200-1¼)	1540-1½ 1169 (1200-1½)	NA	

MRL Rwy 7-25