

WAAS CH 63234 W18A	APP CRS 177°	Rwy Ldg TDZE 1152 Apt Elev 1153
--	------------------------	---

RNAV (GPS) RWY 18

ABILENE MUNI (K78)

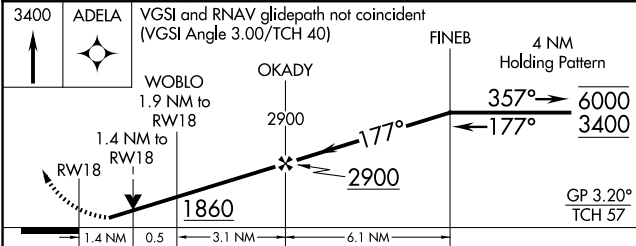
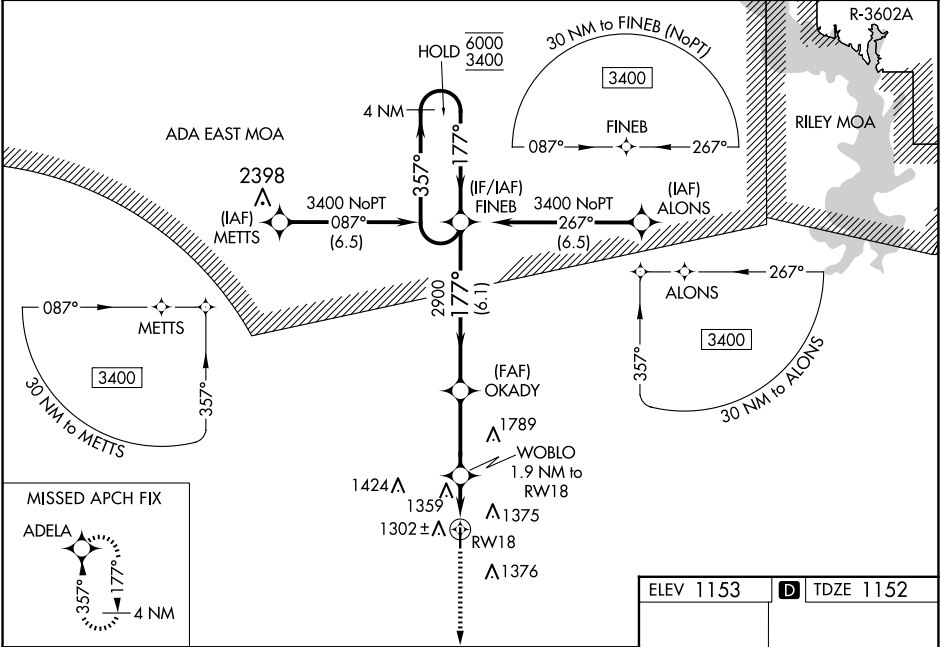
RNP APCH - GPS.

NA

Rwy 18 helicopter visibility reduction below ¾ SM NA. For uncompensated Baro-VNAV systems, LNAV/VNAV NA below -17°C or above 54°C. Baro-VNAV and VDP NA when using SLN altimeter setting. When local altimeter setting not received, use SLN altimeter setting and increase LPV DA to 1565 feet and all visibilities ⅜ SM; increase LNAV/VNAV DA to 1710 feet and all visibilities ¼ SM; increase all MDAs 80 feet and LNAV visibility Cat C ¼ SM, and Circling visibility Cat C ¼ SM.

MISSED APPROACH: Climb to 3400 direct ADELA and hold.

AWOS-3P 124.125	MARSHALL AAF GCA* 121.25 269.05	UNICOM 122.8 (CTAF)
---------------------------	---	-------------------------------



CATEGORY	A	B	C	D
LPV DA	1498-1	346 (400-1)		NA
LNAV/VNAV DA	1643-1⅓	491 (500-1⅓)		NA
LNAV MDA	1660-1	508 (600-1)	1660-1⅓ 508 (600-1⅓)	NA
CIRCLING	1680-1	527 (600-1)	1900-2¼ 747 (800-2¼)	NA

