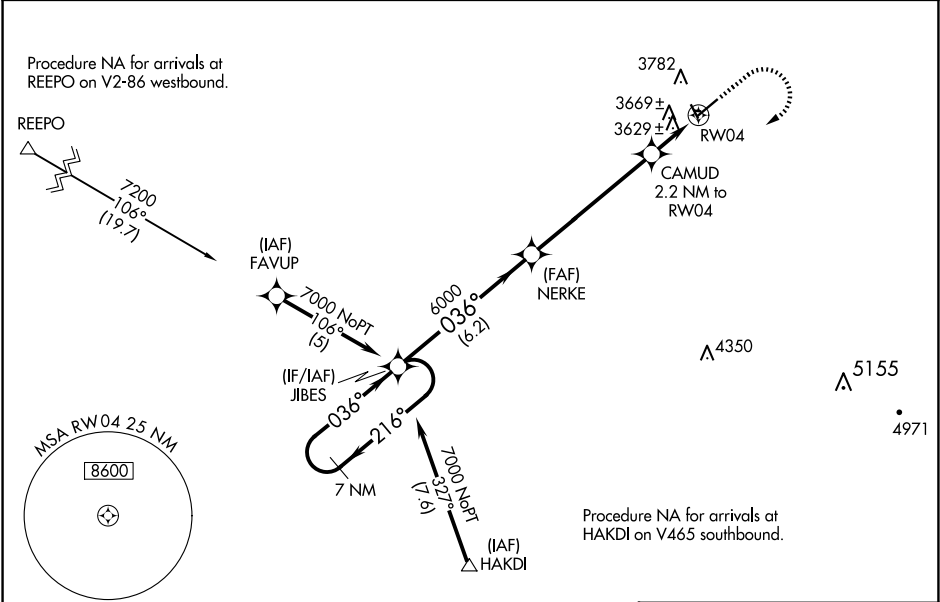


WAAS CH <b>70422</b> <b>W04A</b>	APP CRS <b>036°</b>	Rwy Idg <b>5199</b> TDZE <b>3488</b> Apt Elev <b>3543</b>
--	------------------------	---

RNAV (GPS) RWY 4

LAUREL MUNI (6S8)

RNP APCH. <div><div></div><div>For uncompensated Baro-VNAV systems, LNAV/VNAV NA below -21°C or above 54°C. When local altimeter setting not received, use Billings altimeter setting. Baro-VNAV and VDP NA when using Billings altimeter setting. Rwy 4 helicopter visibility reduction below ¾ SM NA.</div></div>		MISSED APPROACH: Climb to 4300 then climbing right turn to 7000 direct JIBES and hold.
AWOS-2 <b>135.05</b>	BILLINGS APP CON <b>119.2 120.5 284.6</b>	AUNICOM <b>123.05 (CTAF) 0</b>



ELEV 3543		TDZE 3488	
7 NM Holding Pattern		*LNAV only.	
GP 3.00° TCH 33		MIRL Rwy 4-22 and 14-32 0	
CATEGORY	A	B	C
LPV DA	3783-1 295 (300-1)		
LNAV/VNAV DA	3981-1¾ 493 (500-1¾)		
LNAV MDA	3980-1 492 (500-1)	3980-1¾ 492 (500-1¾)	

NW-1, 10 JUL 2025 to 07 AUG 2025

NW-1, 10 JUL 2025 to 07 AUG 2025