

OKOLONA, MISSISSIPPI

AL-6780 (FAA)

22083

WAAS CH <b>53535</b> <b>W18A</b>	APP CRS <b>182°</b>	Rwy Idg <b>3197</b> TDZE <b>337</b> Apt Elev <b>337</b>
--	------------------------	---

RNAV (GPS) RWY 18  
OKOLONA MUNI/RICHARD STOVALL FLD (5A4)

**T** Baro-VNAV NA. DME/DME RNP-0.3 NA. Use Tupelo altimeter setting; when not received, use Columbus Air Force Base altimeter setting and increase all DA 41 feet and all MDA 60 feet, increase LPV and LNAV/VNAV all Cats visibility  $\frac{1}{8}$  mile, LNAV Cat C visibility  $\frac{1}{2}$  mile.

**A** NA Rwy 18 helicopter visibility reduction below  $\frac{3}{4}$  SM NA.

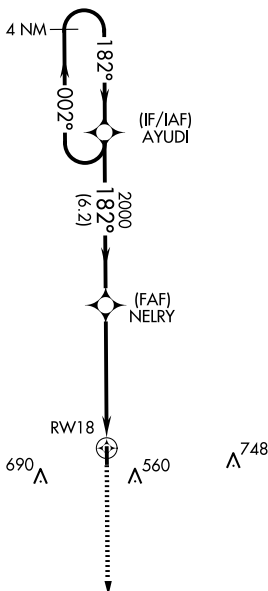
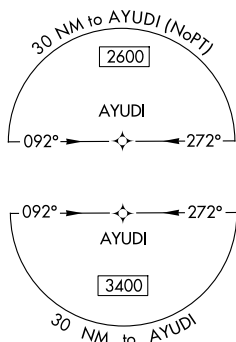
**MISSED APPROACH:**  
Climb to 2000 direct  
MUMDE and hold.

COLUMBUS APP CON ★

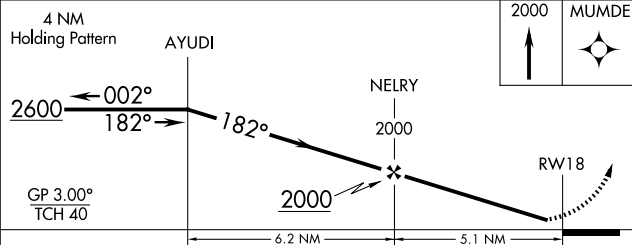
126.075 229.15


CTAF

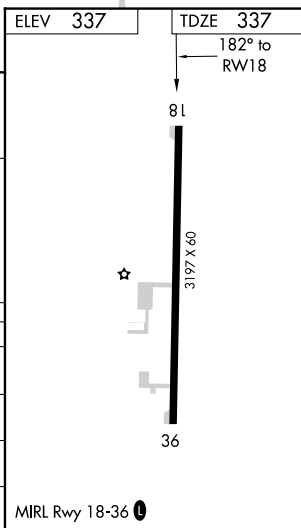
122.9 L



MISSED APCH FIX



CATEGORY	A	B	C	D
LPV DA	624-1 287 (300-1)			NA
LNAV/ VNAV DA	669-1½ 332 (400-1½)			NA
LNAV MDA	820-1 483 (500-1)		820-1¾ 483 (500-1¾)	NA
 CIRCLING	920-1 583 (600-1)		1080-2¼ 743 (800-2¼)	NA



SC-4, 10 JUL 2025 to 07 AUG 2025

OKOLONA, MISSISSIPPI

Amdt 1A 15SEP16

OKOLONA MUNI/RICHARD STOVALL FID (5A4)

34°-01'N - 88°44'W

RNAV (GPS) RWY 18