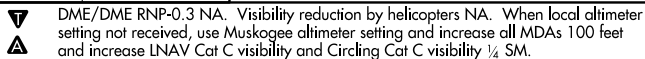


APP CRS  
177°

Rwy Idg	<b>5001</b>
TDZE	<b>874</b>
Apt Elev	<b>874</b>

## RNAV (GPS) RWY 17

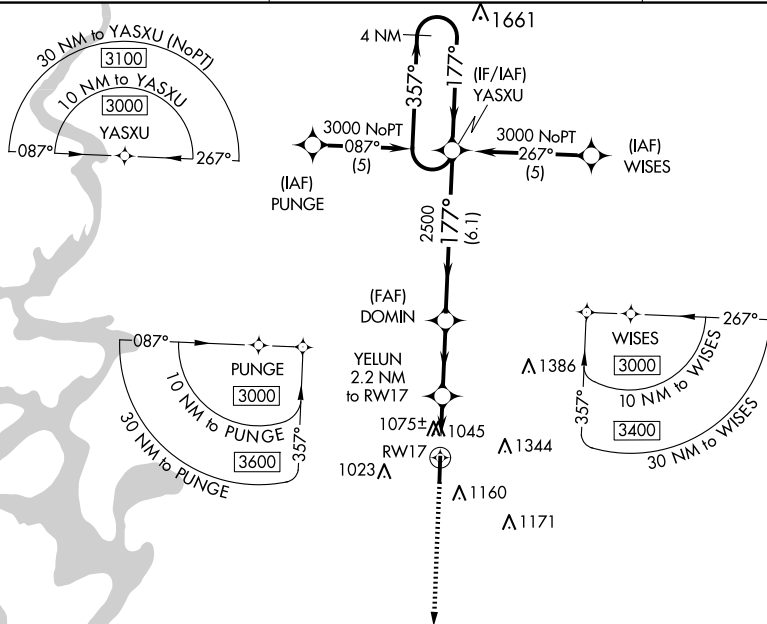
TAHLEQUAH MUNI (TQH)



**MISSED APPROACH:** Climb to 3100  
direct SUBME and hold.

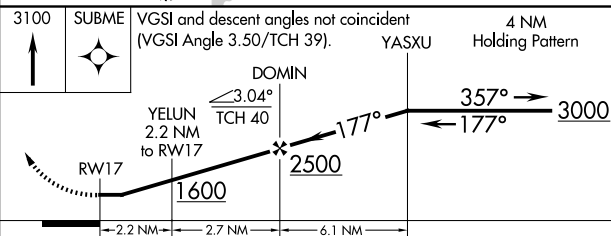
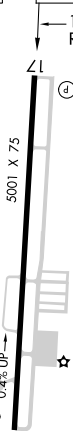
AWOS-3P  
118.425

MEMPHIS CENTER  
126.1 269.0

UNICOM  
122.8 (CTAF) **L**

ELEV 874

TDZE 874



CATEGORY	A	B	C	D
LNAV MDA	1380-1 506 (600-1)		1380-1½ 506 (600-1½)	NA
CIRCLING	1520-1 646 (700-1)		1780-2¾ 906 (1000-2¾)	NA

TAHLEQUAH, OKLAHOMA

Amdt 1A 30DEC21

35°56'N-95°00'W

TAHLEQUAH MUNI (TOH)

RNAV (GPS) RWY 17

SC-1, 10 JUL 2025 to 07 AUG 2025

SC-1, 10 JUL 2025 to 07 AUG 2025