

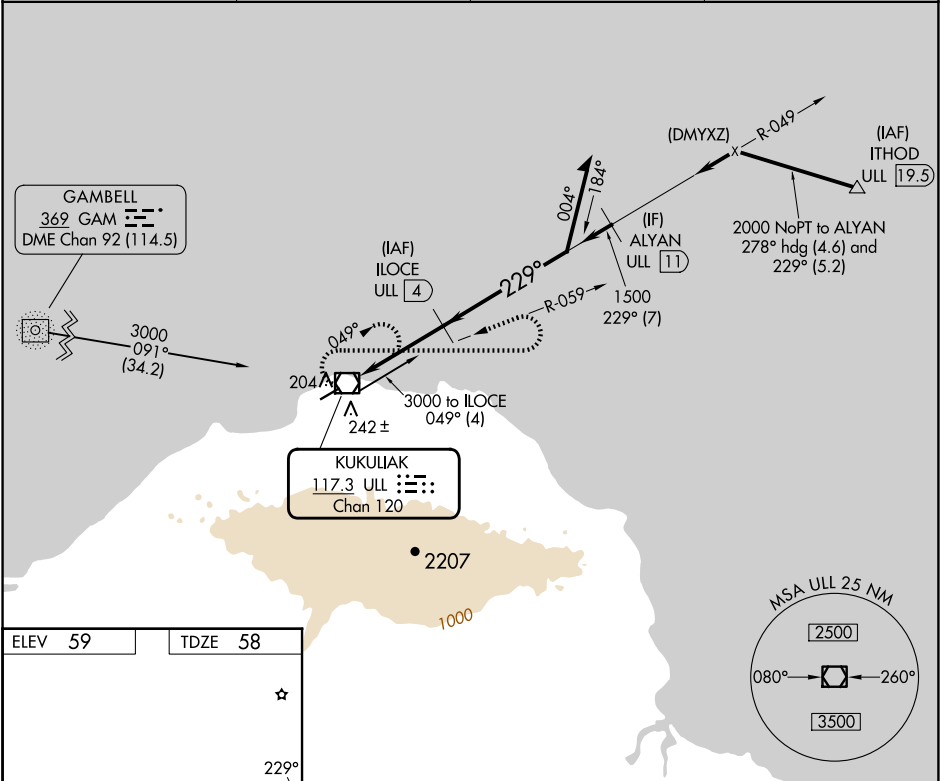
VOR/DME ULL	APP CRS	Rwy Idg	4400
117.3	229°	TDZE	58
Chan 120		Apt Elev	59

VOR/DME RWY 23
SAVOONGA (SVA) (PASA)

⚠ Circling NA southeast of Rwy 5-23. When local altimeter setting not received, use Gambell altimeter setting and increase all MDAs 100 feet; increase S-23 Cat C/D visibility ¼ SM and Circling Cat C visibility ½ SM. VDP NA with Gambell altimeter setting.

MISSED APPROACH: Climbing right turn to 3300 via heading 090° and via ULL VOR/DME R-059 then left turn via ULL VOR/DME R-059 to ULL VOR/DME and hold.

AWOS-3P 121.3	ANCHORAGE CENTER 132.2 281.4	NOME RADIO 122.3	CTAF 122.7 0
-------------------------	----------------------------------------	----------------------------	------------------------



ELEV 59	TDZE 58
---------	---------

3000 091° (34.2)

204 A 242 ±

KUKULIAK 117.3 ULL Chan 120

2207

1000

MSA ULL 25 NM

2500

080° 260°

3500

3300 ULL R-059 ULL R-059 ULL

3000 ILOCE ULL 4 VGSI and descent angles not coincident (VGSI Angle 3.00/TCH 24).

049° 229° 1500 2000

2.96° TCH 50

0.5 1.1 NM 2.9 NM

CATEGORY	A	B	C	D
S-23	600-1 542 (600-1)	600-1½ 542 (600-1½)	600-1¾ 542 (600-1¾)	600-1¾ 542 (600-1¾)
CIRCLING	600-1 541 (600-1)	780-2 721 (800-2)	1160-3 1101 (1200-3)	