

APP CRS  
**235°**

Rwy Idg  
TDZE  
**58**


Apt Elev  
**59**

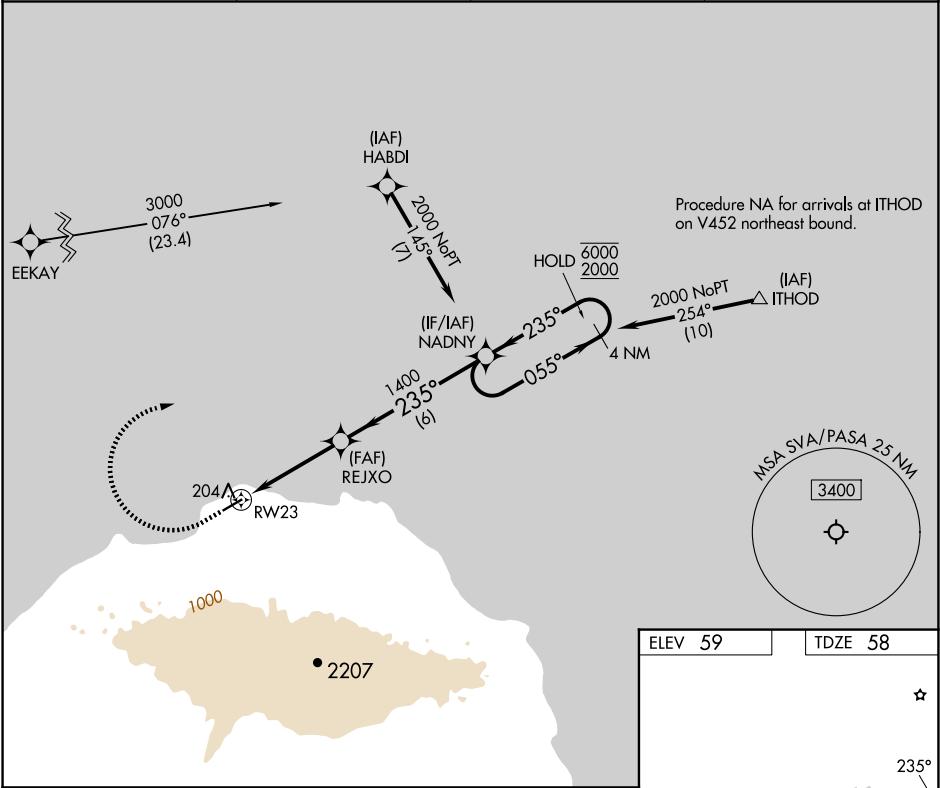
RNAV (GPS) RWY 23

SAVOONGA (SVA) (PASA)

RNP APCH - GPS.

MISSSED APPROACH: Climb to 510 then climbing right turn to 2000 direct NADNY and hold.

AWOS-3P <b>121.3</b>	ANCHORAGE CENTER <b>132.2 281.4</b>	NOME RADIO <b>122.3</b>	CTAF <b>122.7</b> 
-------------------------	--	----------------------------	--



510

2000

NADNY

VGSI and descent angles not coincident (VGSI Angle 3.00/TCH 24).

REJXO

1.2 NM to RWY 23

≤3.00° TCH 30

1.2 NM

2.9 NM

6 NM

NADNY

4 NM Holding Pattern

055°

235°

6000

2000

1400

CATEGORY	A	B	C	D
LNAY MDA	460-1	402 (500-1)	460-1 $\frac{1}{8}$	402 (500-1 $\frac{1}{8}$ )
CIRCLING	520-1	461 (500-1)	780-2 721 (800-2)	1100-3 1041 (1100-3)

ELEV 59

TDZE 58

MIRL Rwy 5-23 