

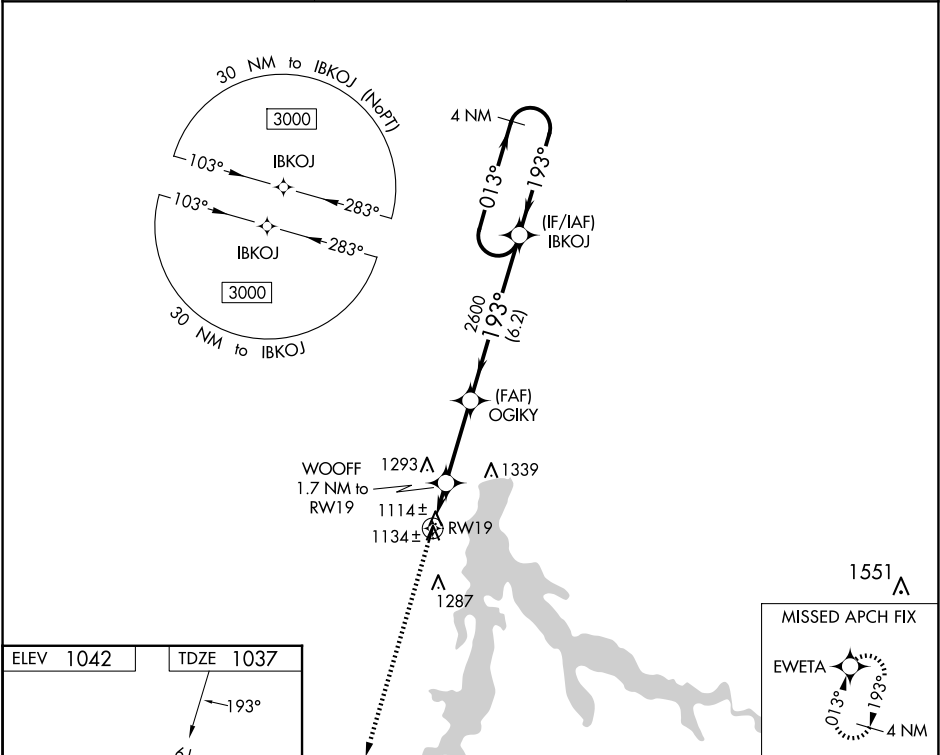
WAAS CH 50334 W19A	APP CRS 193°	Rwy Idg 3060 TDZE 1037 Apt Elev 1042
--	------------------------	---

RNAV (GPS) RWY 19

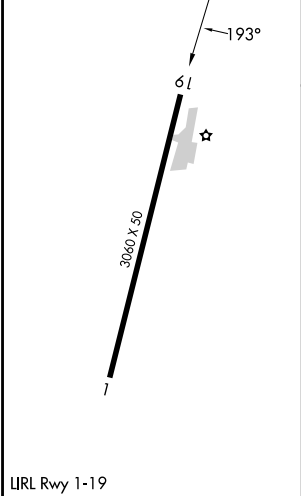
STOCKTON LAKE (MO3)

<div><div>Procedure NA at night. Use Nevada altimeter setting; when not received, use Springfield altimeter setting and increase all MDA 40 feet. DME/DME RNP-0.3 NA. Helicopter visibility reduction below 1 SM NA.</div><div>MISSED APPROACH: Climb to 3000 direct EWETA and hold.</div></div>
--

NVD AWOS-3PT 119.175	SPRINGFIELD APP CON 124.95	CTAF 122.9
--------------------------------	--------------------------------------	----------------------



ELEV 1042	TDZE 1037
-----------	-----------



3000	EWETA	Visual Segment - Obstacles.	IBKOJ	4 NM Holding Pattern
↑	✧			013° → 3000 ← 193°
WOOFF 1.7 NM to RWY 19	OGIKY			
1600	2600			
1.7 NM	3.1 NM	6.2 NM		
CATEGORY	A	B	C	D
LP MDA	1460-1	423 (500-1)	NA	
LNAV MDA	1480-1	443 (500-1)	NA	
CIRCLING	1560-1 518 (600-1)	1700-1 658 (700-1)	NA	