

APP CRS	Rwy Idg	3060
013°	TDZE	1034
	Apt Elev	1042

RNAV (GPS) RWY 1

STOCKTON LAKE (MO3)

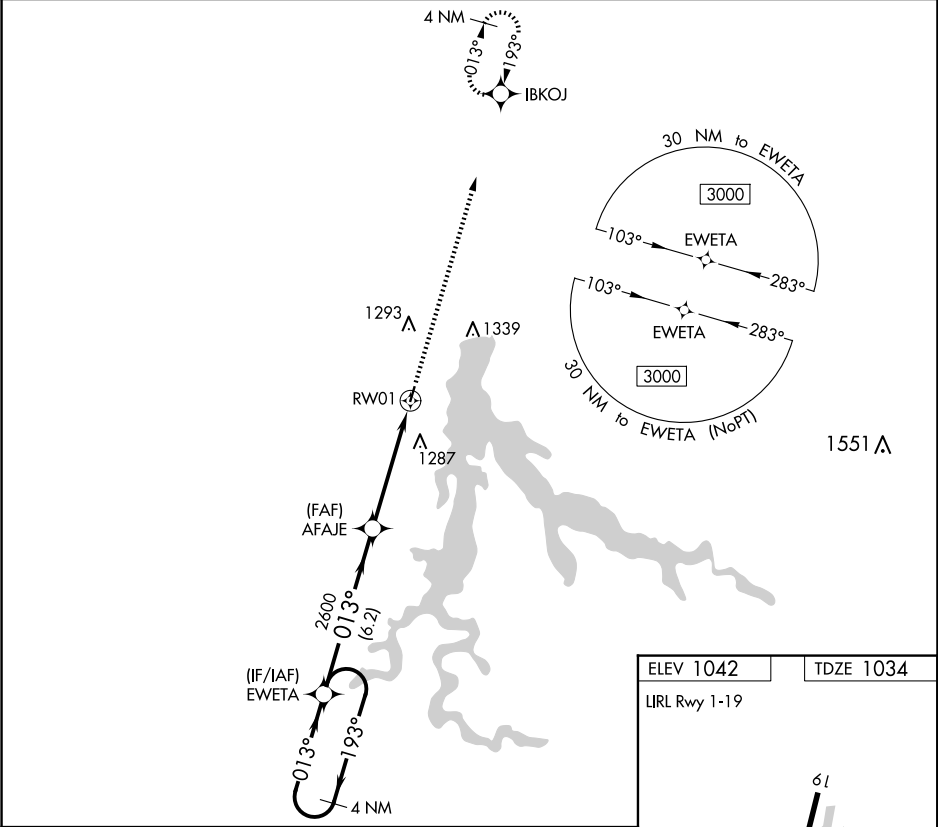
▼

▲ NA

Use Nevada altimeter setting; when not received, use Springfield altimeter setting and increase all MDA 40 feet. DME/DME RNP-0.3 NA. Helicopter visibility reduction below 1 SM NA. Procedure NA at night.

MISSED APPROACH: Climb to 3000 direct IBKOJ and hold.

NVD AWOS-3PT 119.175	SPRINGFIELD APP CON 124.95	CTAF 122.9
-------------------------	-------------------------------	---------------



ELEV 1042

TDZE 1034

LIRL Rwy 1-19

4 NM Holding Pattern		EWETA		Visual Segment - Obstacles.		3000 ↑	IBKO ✱
3000 ← 193°		013° →		013° →		2600	
				AFAJE		RW01	
		6.2 NM		4.8 NM			
CATEGORY	A	B	C	D			
LNAV MDA	1600-1	566 (600-1)	NA				
CIRCLING	1600-1 558 (600-1)	1700-1 658 (700-1)	NA				