

WAAS CH 97534 W35A	APP CRS 354°	Rwy Idg 5100 TDZE 1605 Apt Elev 1605
--	------------------------	---

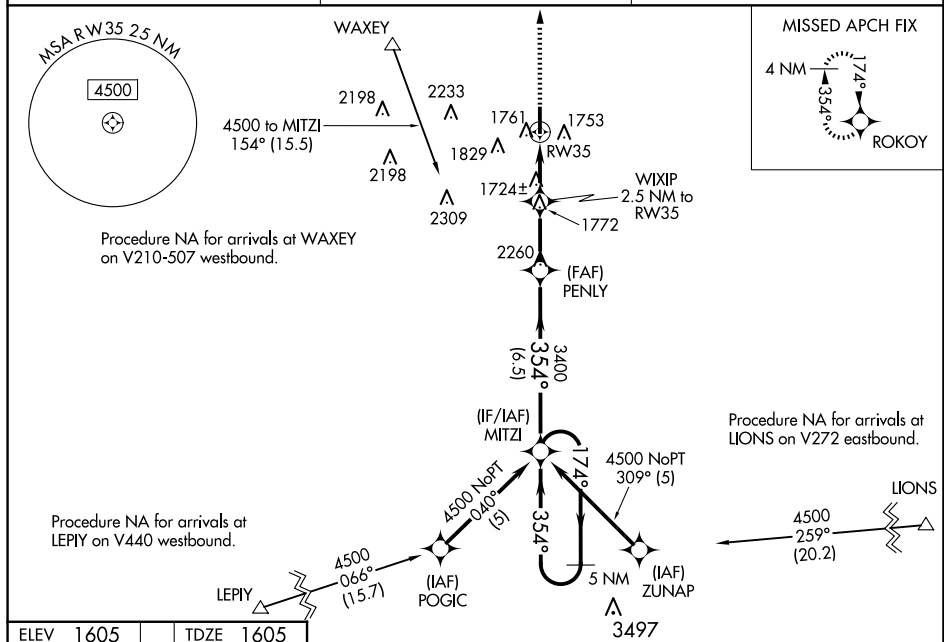
RNAV (GPS) RWY 35
WEATHERFORD STAFFORD (OJA)

RNP APCH.

T Straight-in Rwy 35 at night, Circling Rwy 17 at night, operational VGSI required, remain on or above VGSI glidepath until threshold. Rwy 17 helicopter visibility below 1 SM NA. **A** When local altimeter setting not received, use Clinton Rgnl altimeter setting: increase all MDA 40 feet and visibility Cat C ¼ mile.

MISSED APPROACH:
Climb to 4000 direct
ROKOY and hold.

AWOS-3PT 118.575	FORT WORTH CENTER 128.4 269.37	UNICOM 122.8 (CTAF) 0
----------------------------	--	--



The diagram illustrates the RW35 approach. It shows a vertical runway (RW35) with a 5100 x 75 ft surface. A 35° angle is indicated between the runway axis and the approach path. The approach path is defined by a series of waypoints: RW35, WIXIP (2.5 NM to RW35), PENLY, and MITZI (5 NM Holding Pattern). The approach is a 3400 ft path with a 354° heading. A 174° heading is also shown. The diagram includes a table with the following data:

CATEGORY	A	B	C	D
LP MDA	1980-1	375 (400-1)		NA
LNAV MDA	2020-1	415 (500-1)	2020-1 ¹ / ₈ 415 (500-1 ¹ / ₈)	NA
CIRCLING	2080-1 475 (500-1)	2140-1 535 (600-1)	2380-2 ¹ / ₄ 775 (800-2 ¹ / ₄)	NA