

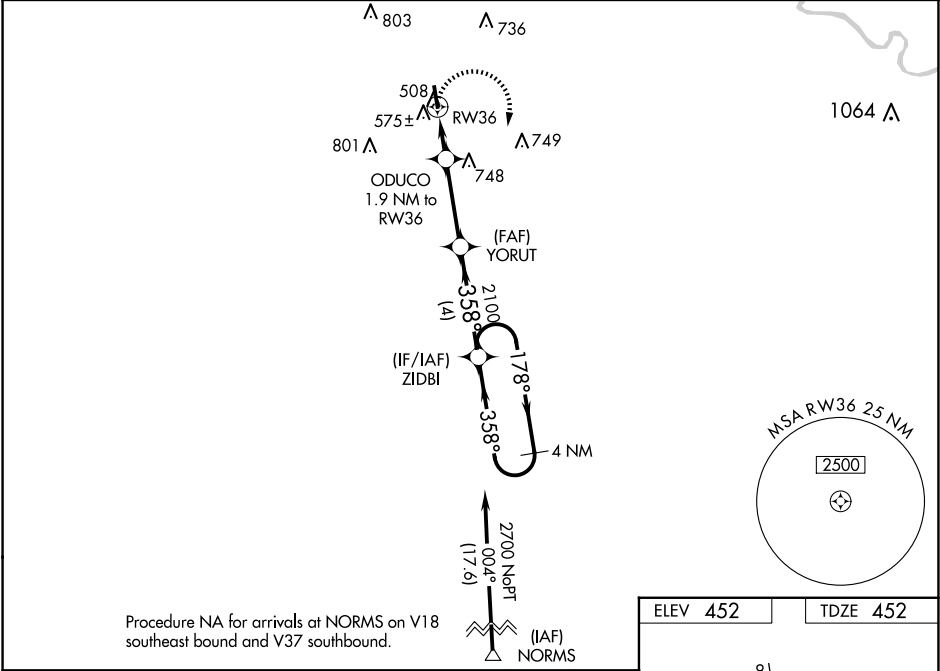
WAAS CH <b>40326</b> <b>W36A</b>	APP CRS <b>358°</b>	Rwy Idg <b>4335</b> TDZE <b>452</b> Apt Elev <b>452</b>
--	------------------------	---

RNAV (GPS) RWY 36

LEXINGTON COUNTY (6J0)

RNP APCH.	Baro-VNAV NA. Rwy 36 helicopter visibility reduction below ¾ SM NA. Use Columbia Metro altimeter setting; when not received use Jim Hamilton L B Owens altimeter setting and increase all DA 19 feet, all MDA 20 feet and increase LPV and LNAV/VNAV all Cats visibility ½ mile.	MISSED APPROACH: Climbing right turn to 2700 direct ZIDBI and hold.
-----------	---	---

CAE ASOS <b>120.15</b>	COLUMBIA APP CON <b>124.15 338.2</b>	UNICOM <b>123.0 (CTAF) 0</b>
---------------------------	---	---------------------------------



4 NM Holding Pattern				
2700 ←178° 358°→ 358° 2100 YORUT ODUCO 1.9 NM to RW36 RW36				
GP 3.00° TCH 32				
4 NM 3.2 NM 1.9 NM				
CATEGORY	A	B	C	D
LPV DA	757-1	305 (400-1)	NA	
LNAV/VNAV DA	793-1½	341 (400-1½)	NA	
LNAV MDA	880-1	428 (500-1)	NA	
CIRCLING	980-1 528 (600-1)	1060-1 608 (700-1)	NA	

