

WAAS

CH 82526

W18A

APP CRS

178°

Rwy Idg

4335

TDZE

452

Apt Elev

452

RNAV (GPS) RWY 18

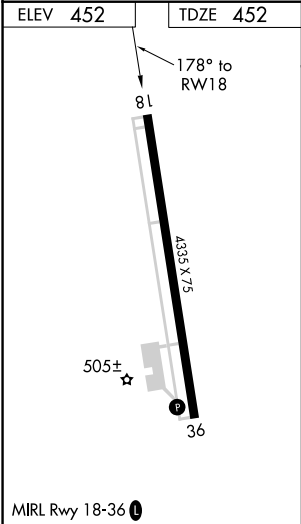
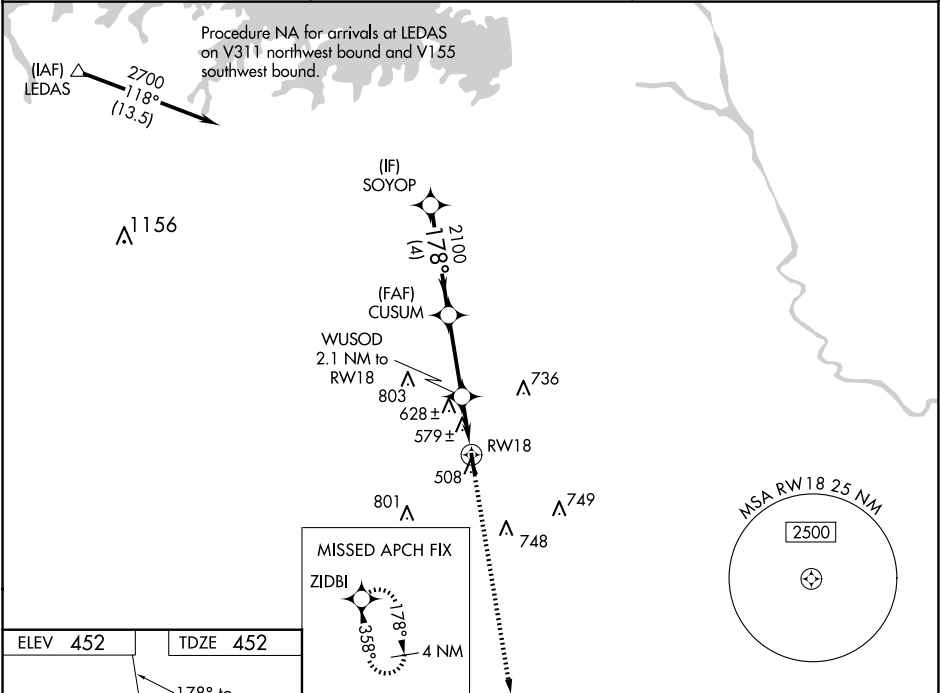
LEXINGTON COUNTY (6J0)

RNP APCH.

Baro-VNAV NA. Rwy 18 helicopter visibility reduction below ¾ SM NA. Use Columbia Metro altimeter setting; when not received use Jim Hamilton L B Owens altimeter setting and increase all DA 19 feet, all MDA 20 feet and increase LPV and LNAV/VNAV all Cts visibility ½ mile.

MISSED APPROACH: Climb to 2700 direct ZIDBI and hold.

CAE ASOS 120.15	COLUMBIA APP CON 124.15 338.2	UNICOM 123.0 (CTAF) 0
--------------------	----------------------------------	--------------------------



SOYOP				2700	ZIDBI
2700				178°	
CUSUM				2100	
GP 3.00°				TCH 40	
WUSOD				*2.1 NM to RW18	
RW18				*1140	
4 NM				3 NM	2.1 NM
CATEGORY	A	B	C	D	
LPV DA	757-1	305 (400-1)	NA		
LNAV/VNAV DA	797-1½	345 (400-1½)	NA		
LNAV MDA	940-1	488 (500-1)	NA		
CIRCLING	980-1	1060-1	NA		
	528 (600-1)	608 (700-1)			