

WAAS CH 49031 W13A	APP CRS 139°	Rwy Ldg 4399 TDZE 1942 Apt Elev 1944
--	------------------------	---

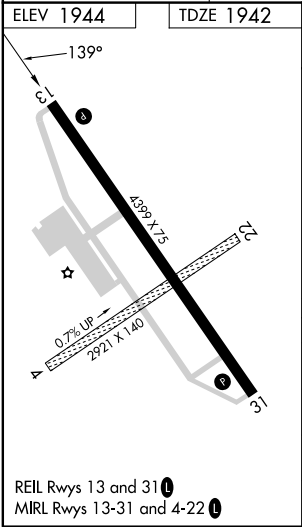
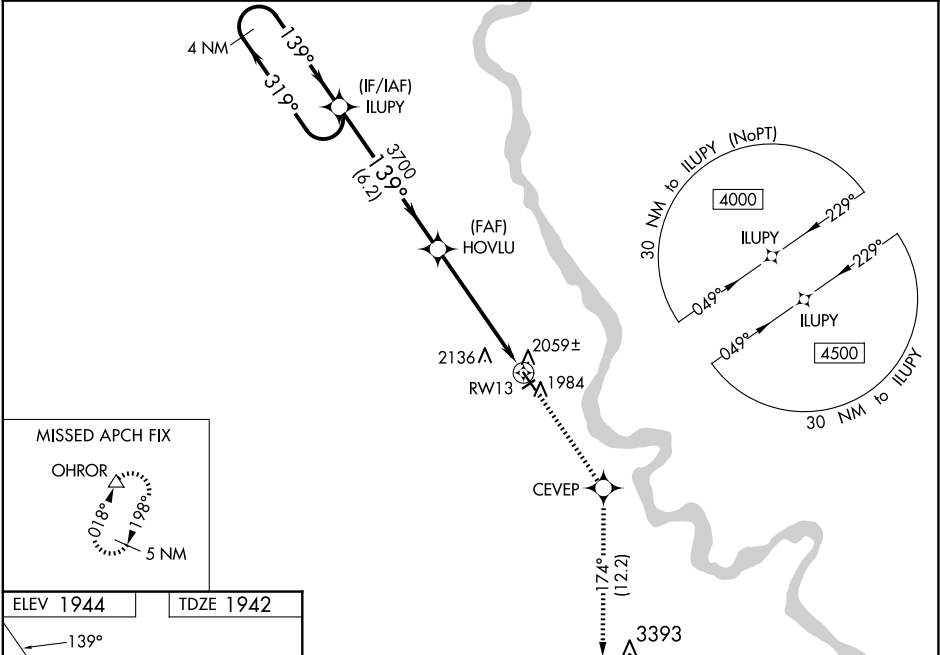
RNAV (GPS) RWY 13

MANDAN RGNL/LAWLER FLD (Y19)

Baro-VNAV NA when using Bismarck altimeter setting. For uncompensated Baro-VNAV systems, LNAV/VNAV NA below -18°C (0°F) or above 54°C (130°F). DME/DME RNP-0.3 NA. Helicopter visibility reduction below ¾ SM not authorized. VDP NA when using Bismarck altimeter setting. When local altimeter setting not received, use Bismarck altimeter setting and increase all DA 54 feet and LPV all Cats visibility ¼ mile, LNAV/VNAV all Cats visibility ½ mile, increase all MDA 60 feet and LNAV Cat C/D and Circling Cat D visibility ¼ mile. Circling to Rwy 4 and 22 NA.

MISSED APPROACH:
Climb to 4700 direct
CEVEP and on track
174° to OHROR and
hold.

AWOS-3 118.225	BISMARCK APP CON ★ 126.3 298.9	UNICOM 122.8 (CTAF) 0
--------------------------	--	---------------------------------



VGSI and RNAV glidepath not coincident (VGSI Angle 3.00/TCH 25).				
<div><div>4 NM Holding Pattern</div><div>ILUPY</div><div>HOVLU</div><div>CEVEP</div><div>OHROR</div></div>				
<div><div>4000</div><div>319°</div><div>139°</div><div>3700</div><div>3700</div><div>6.2 NM</div><div>4.3 NM</div><div>1.1 NM</div><div>RW13</div></div>				
GP 3.00° TCH 55				
CATEGORY	A	B	C	D
LPV DA	2192-¾ 250 (300-¾)			
LNAV/VNAV DA	2244-1 302 (300-1)			
LNAV MDA	2320-1 378 (400-1)			
CIRCLING	2360-1 416 (500-1)	2460-1 516 (600-1)	2460-1½ 516 (600-1½)	2560-2 616 (700-2)

NC-1, 10 JUL 2025 to 07 AUG 2025

NC-1, 10 JUL 2025 to 07 AUG 2025