

WAAS CH 70319 W24A	APP CRS 238°	Rwy Idg 12000 TDZE 30 Apt Elev 30
--	------------------------	--

RNAV (GPS) Y RWY 24

SOUTHWEST FLORIDA INTL (RSW)

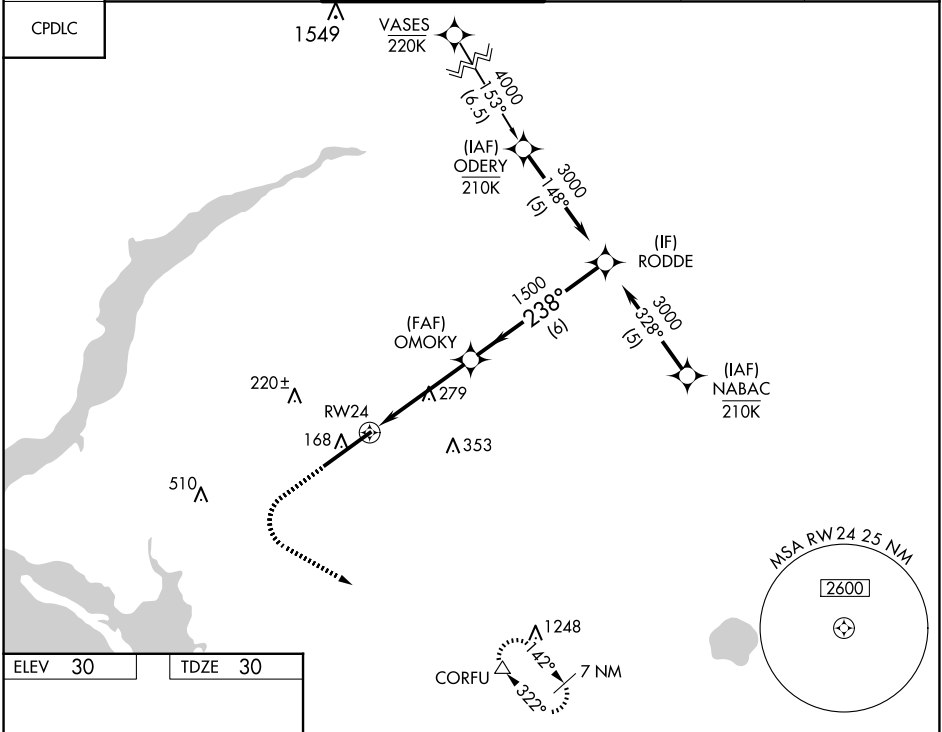
RNP APCH - GPS.

▼

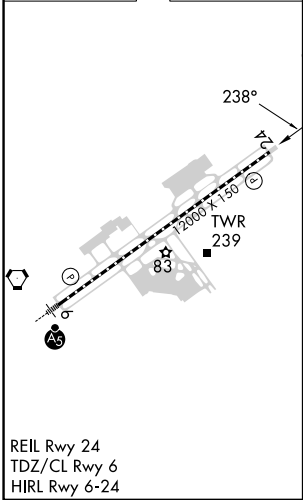
For uncompensated Baro-VNAV systems, LNAV/VNAV NA below 4°C or above 54°C. Rwy 24 helicopter visibility reduction below ¾ SM NA.

MISSED APPROACH: Climb to 500 then climbing left turn to 2300 direct CORFU and hold, continue climb-in-hold to 2300.

D-ATIS 124.65	FORT MYERS APP CON ★ 125.15 306.2 (RWY 6) 126.8 306.2 (RWY 24)	FORT MYERS TOWER ★ 128.75 (CTAF) 0 257.8	GND CON 121.9 257.8	CLNC DEL 132.075	UNICOM 122.95
-------------------------	--	---	-------------------------------	----------------------------	-------------------------



ELEV 30	TDZE 30
---------	---------



REIL Rwy 24
TDZ/CL Rwy 6
HIRL Rwy 6-24

500	2300	CORFU △	VGSI and RNAV glidepath not coincident (VGSI Angle 3.00/TCH 72).		RODDE
CATEGORY					
LPV DA		280-3 ⁴ / ₄		250 (300-3 ⁴ / ₄)	
LNAV/VNAV DA		292-7 ⁸ / ₈		262 (300-7 ⁸ / ₈)	
LNAV MDA		540-1 510 (600-1)		540-1 ³ / ₈ 510 (600-1 ³ / ₈)	
CIRCLING		560-1 530 (600-1)		580-1 ¹ / ₂ 660-2 550 (600-1 ¹ / ₂) 630 (700-2)	