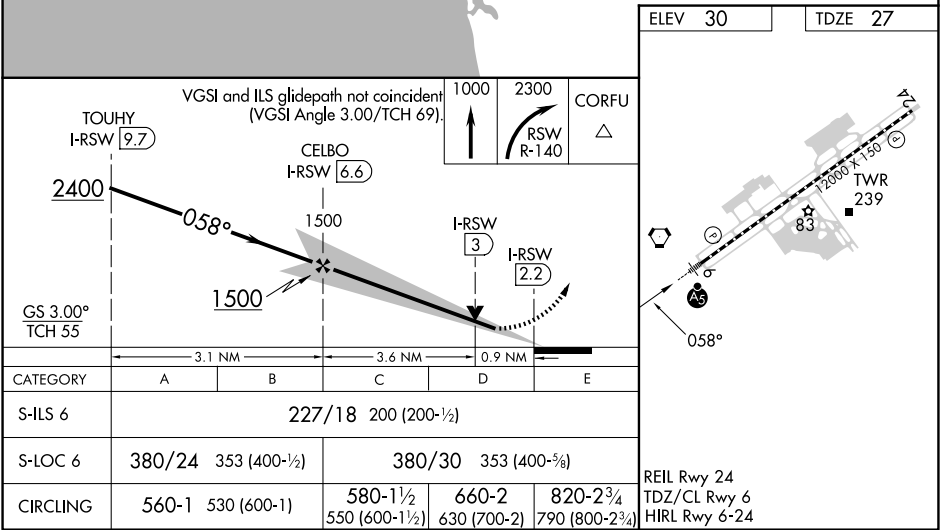
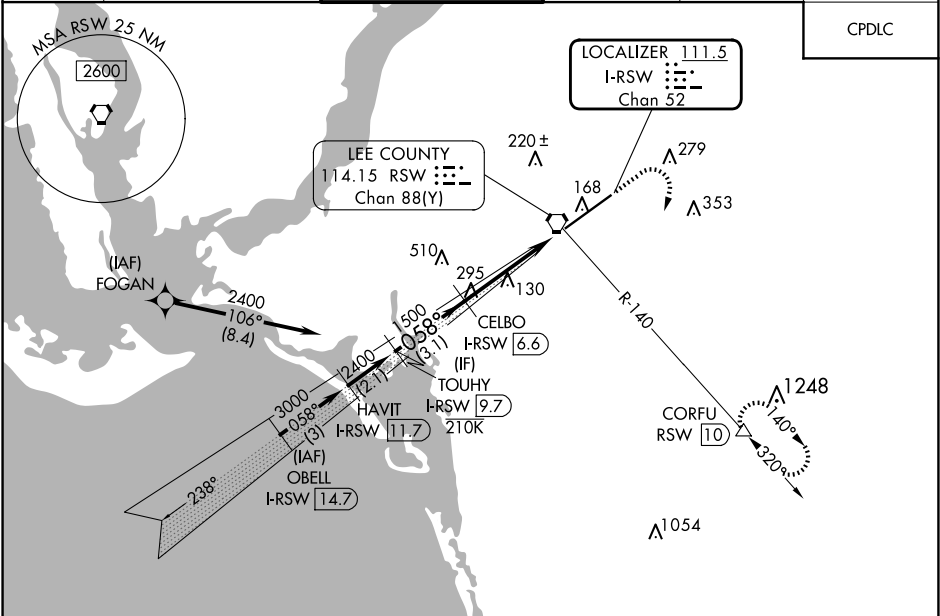


LOC/DME	I-RSW	Rwy Idg	12000
111.5	APP CRS	TDZE	27
Chan 52	058°	Apt Elev	30

ILS or LOC RWY 6
SOUTHWEST FLORIDA INTL (RSW)

RNP APCH - GPS from FOGAN. DME required.	MALSR	MISSED APPROACH: Climb to 1000 then climbing right turn to 2300 on RSW VORTAC R-140 to CORFU/RSW 10 DME and hold.
For inop ALS, increase S-ILS 6 Cat E visibility to RVR 4000 and S-LOC 6 Cats C/D/E to RVR 5500.		

D-ATIS 124.65	FORT MYERS APP CON ★ 125.15 306.2 (RWY 6) 126.8 306.2 (RWY 24)	FORT MYERS TOWER ★ 128.75 (CTAF) 0 257.8	GND CON 121.9 257.8	CLNC DEL 132.075	UNICOM 122.95
------------------	--	---	------------------------	---------------------	------------------



SE-3, 10 JUL 2025 to 07 AUG 2025

SE-3, 10 JUL 2025 to 07 AUG 2025