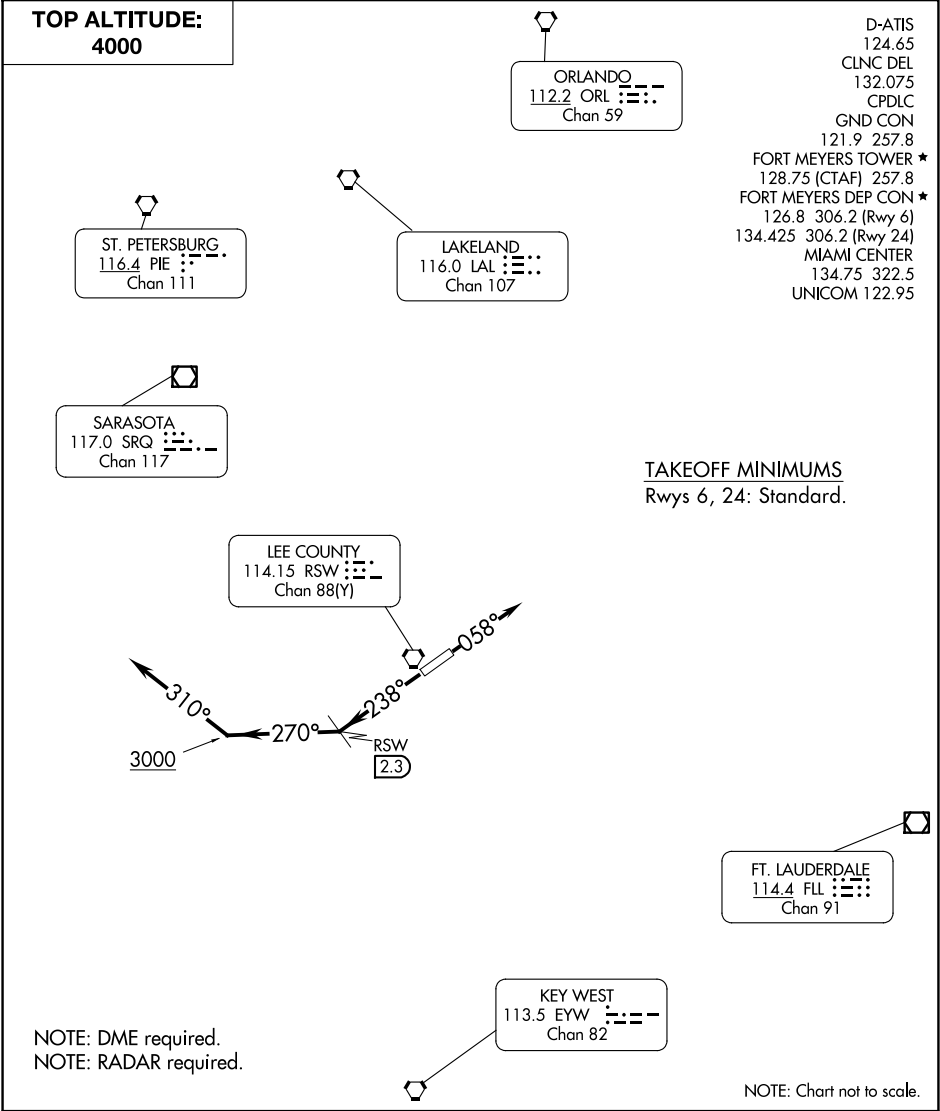


ALICO SEVEN DEPARTURE



DEPARTURE ROUTE DESCRIPTION

TAKEOFF RUNWAY 6: Climb on heading 058° or as assigned for vectors to assigned route.

TAKEOFF RUNWAY 24: Climb on heading 238° or as assigned until RSW 2.3 DME, then turn right to heading 270°. Leaving 3000, turn right heading 310°. Expect RADAR vectors to assigned route.

All aircraft maintain 4000 or assigned lower altitude. Expect further clearance to filed altitude within 10 minutes after departure.

SE-3, 10 JUL 2025 to 07 AUG 2025

SE-3, 10 JUL 2025 to 07 AUG 2025