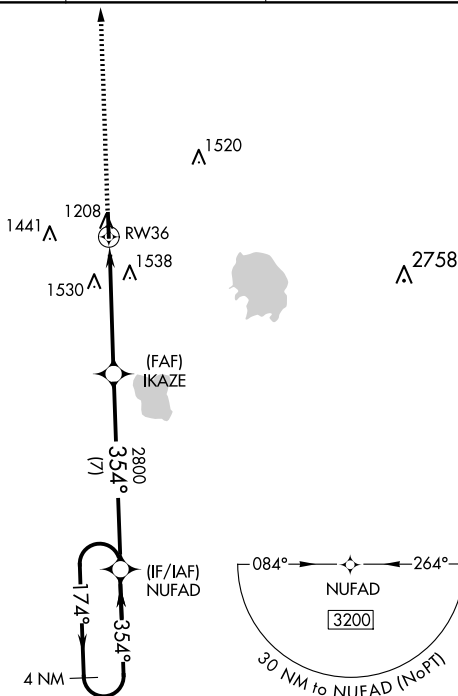
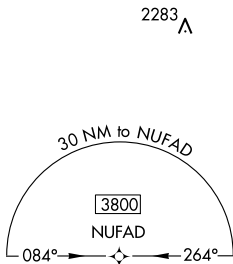




RNAV (GPS) RWY 36
SUNDANCE (HSD)

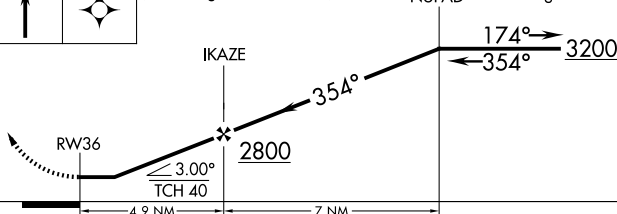
T
A Rwy 36 helicopter visibility reduction below $\frac{3}{4}$ SM NA.

MISSED APPROACH: Climb to 3600 direct YAVOR and hold.

UNICOM
122.7 (CTAF) **L**

| | |
|---|---|
| 3600 | YAVOR |
|  |  |

VGSI and descent angles not coincident (VGSI Angle 3.00/TCH 21).

4 NM
Holding Pattern

| CATEGORY | A | B | C | D |
|----------|-----------------------|-----------------------|--|----|
| LNAV MDA | 1780-1 | 587 (600-1) | 1780-1 ³ / ₄ 587 (600-1 ³ / ₄) | NA |
| CIRCLING | 1780-1 587 (600-1) | 1840-1 647 (700-1) | 1840-1 ³ / ₄ 647 (700-1 ³ / ₄) | NA |