

WAAS  
CH **81923**  
**W18A**

APP CRS  
**174°**

Rwy Ldg **5001**  
TDZE **1177**  
Apt Elev **1193**

**RNAV (GPS) RWY 18**  
SUNDANCE (HSD)

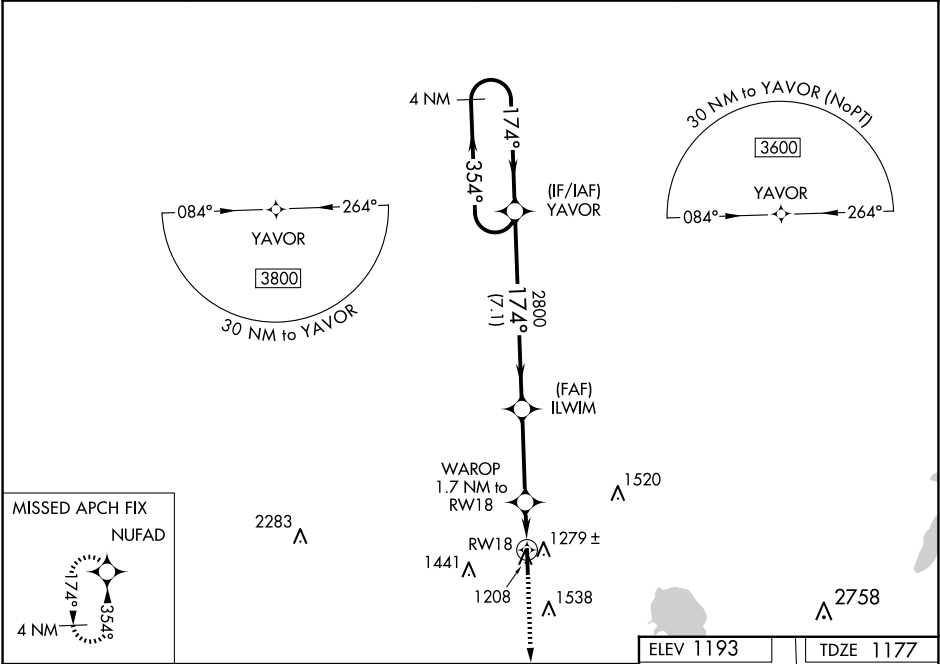
RNP APCH - GPS.

▼  
▲

For uncompensated Baro-VNAV systems, LNAV/VNAV NA below -17°C or above 54°C. Baro-VNAV and VDP NA when using PWA altimeter setting.

MISSED APPROACH:  
Climb to 3200 direct  
NUFAD and hold.

AWOS-3 <b>120.975</b>	OKE CITY APP CON <b>124.6 266.8</b>	CLNC DEL <b>123.7</b>	UNICOM <b>122.7 (CTAF) 0</b>
--------------------------	--	--------------------------	---------------------------------



4 NM Holding Pattern

VGSI and RNAV glidepath not coincident (VGSI Angle 3.00/TCH 30).

3600 ← 354°  
174° →

GP 3.00°  
TCH 40

YAVOR

ILWIM

WAROP 1.7 NM to RW18

1.1 NM to RW18

RW18

7.1 NM

3.4 NM

0.6

1.1

3200

NUFAD

174°

81

0.8% UP

5001 X 100

36

MIRL Rwy 18-36 0

CATEGORY	A	B	C	D
LPV DA	1427-1	250 (300-1)		NA
LNAV/VNAV DA	1473-1½	296 (300-1½)		NA
LNAV MDA	1540-1	363 (400-1)	1540-1½ 363 (400-1½)	NA
CIRCLING	1740-1 547 (600-1)	1840-1 647 (700-1)	1840-1¾ 647 (700-1¾)	NA