

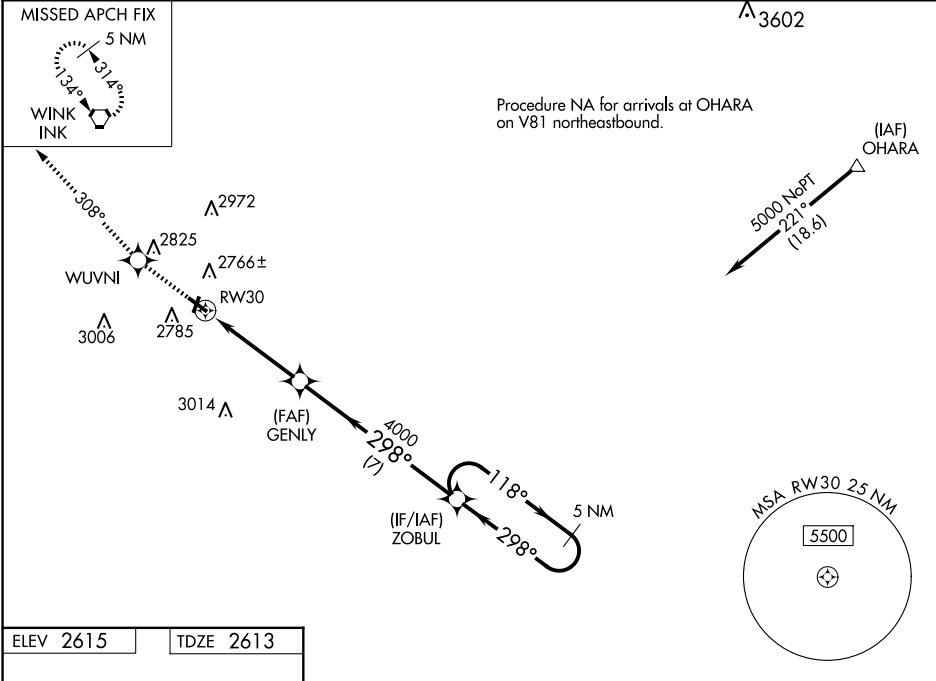
WAAS CH 78027 W30A	APP CRS 298°	Rwy Ldg TDZE 2613 Apt Elev 2615
--	------------------------	---

RNAV (GPS) RWY 30

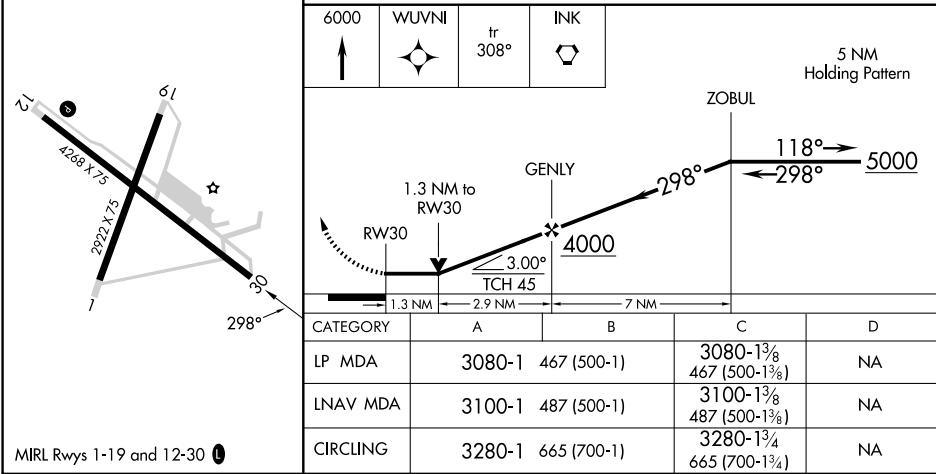
ROY HURD MEML (E01)

RNP APCH GPS	MISSED APPROACH: Climb to 6000 direct WUVNI and on track 308 to NK VORTAC and hold.
▼ When local altimeter setting not received, use INK altimeter setting and increase all MDAs 80 feet and LNAV visibility Cat C ¼ SM, and LP visibility Cat C ¼ SM, and Circling visibility Cat C ½ SM. Rwy 30 helicopter visibility reduction below ¼ SM NA. VDP NA when using INK altimeter setting. Circling Rwy 1, 12, 19 NA at night.	

AWOS-3PT 118.225	FORT WORTH CENTER 133.1 298.95	UNICOM 122.8 (CTAF) 0
----------------------------	--	---------------------------------



ELEV 2615	TDZE 2613
-----------	-----------



SC-3, 10 JUL 2025 to 07 AUG 2025

SC-3, 10 JUL 2025 to 07 AUG 2025