

WAAS  
CH **57927**  
**W12A**

APP CRS  
**118°**

Rwy Ldg  
TDZE **2609**  
Apt Elev **2615**

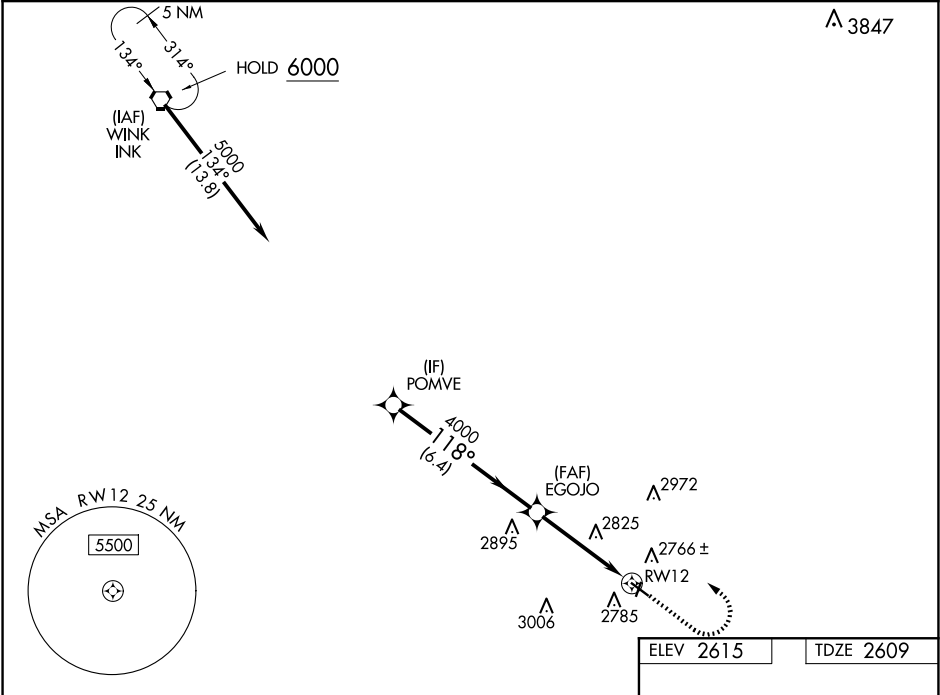
**RNAV (GPS) RWY 12**  
ROY HURD MEML (E01)

RNP APCH GPS.

▼ When local altimeter setting not received, use INK altimeter setting and increase all MDAs 80 feet and LNAV visibility Cat C ¾ SM, and LP visibility Cat C ½ SM, and  
▲ Circling visibility Cat C ½ SM. Rwy 12 helicopter visibility reduction below 1 SM NA. Straight-in Rwy 12 NA at night, Circling Rwy 1, 12, 19 NA at night.

MISSED APPROACH: Climb to 3200 then climbing left turn to 6000 direct INK VORTAC and hold.

AWOS-3PT <b>118.225</b>	FORT WORTH CENTER <b>133.1 298.95</b>	UNICOM <b>122.8 (CTAF) 0</b>
----------------------------	--	---------------------------------



VGSI and descent angles not coincident (VGSI Angle 3.00/TCH 24).				
<div><div>3200</div><div>6000</div><div>INK</div></div>				
<div><div>POMVE</div><div>5000</div><div>118°</div><div>EGOJO</div><div>4000</div><div>3.00°</div><div>TCH 45</div><div>RWY 12</div><div>6.4 NM</div><div>4.2 NM</div></div>				
CATEGORY	A	B	C	D
LP MDA	3100-1	491 (500-1)	3100-1 ¾ 491 (500-1 ¾)	NA
LNAV MDA	3120-1	511 (600-1)	3120-1 ¾ 511 (600-1 ¾)	NA
CIRCLING	3280-1	665 (700-1)	3280-1 ¾ 665 (700-1 ¾)	NA

ELEV 2615

TDZE 2609

MIRL Rwy 1-19 and 12-30 0